

WAAS CH 50107 W27A	APP CRS 274°	Rwy Idg TDZE 778 Apt Elev 778
----------------------------------------	------------------------	---------------------------------------------------

RNAV (GPS) RWY 27

ELKHART MUNI (EKM)

RNP APCH

▼

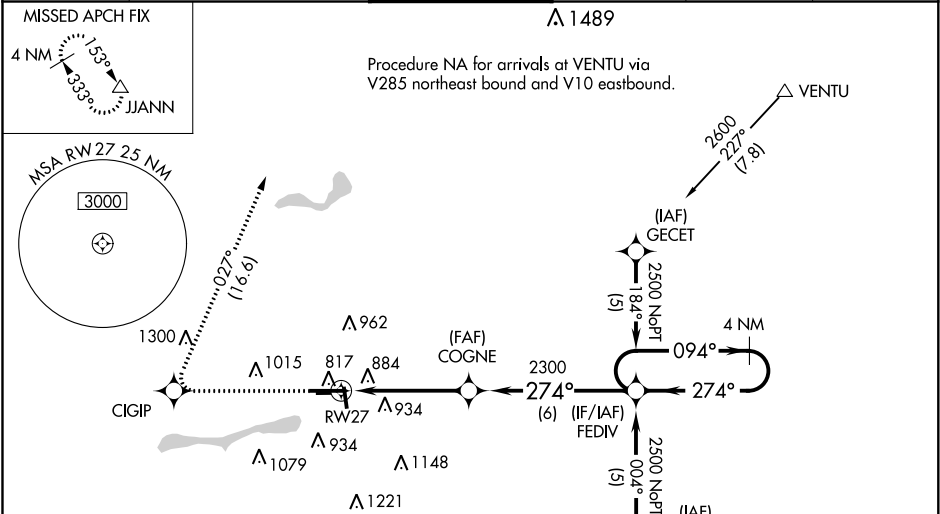
▲

When local altimeter setting not received, use South Bend altimeter setting: increase LPV DA to 1111 feet; increase LNAV/VNAV DA to 1261 feet; increase all MDA 40 feet and LNAV visibility Cat C/D to RVR 5500, Circling Cat D visibility ¼ SM. VDP and Baro-VNAV NA with South Bend altimeter setting. Circling Rwy 36 NA at night. Circling NA to Rwy 8 and 26. Rwy 27 helicopter visibility reduction below RVR 4000 NA. For uncompensated Baro-VNAV systems, LNAV/VNAV NA below -16°C or above 54°C. For inop ALS, increase LPV all Cats visibility to RVR 4500, LNAV/VNAV all Cats visibility to 1½ SM, LNAV Cat A/B visibility to RVR 5500 and Cat C/D to 1¾ SM. For inop ALS when using South Bend altimeter setting, increase LNAV/VNAV all Cats visibility to 1¾ SM and LNAV Cat A/B to RVR 5500

MALSR

MISSED APPROACH:
Climb to 4000 direct CIGIP and via 027° track to JJANN and hold.

AWOS-3 124.475	SOUTH BEND APP CON ★ 118.55 257.8	ELKHART TOWER ★ 119.5 (CTAF) 0	GND CON 121.8	CLNC DEL 121.8	UNICOM 122.95
--------------------------	---------------------------------------------	------------------------------------------	-------------------------	--------------------------	-------------------------



ELEV 778

D

TDZE 778

898

Λ

853±

TWR 820

274° to RW27

6500 X 120

2480 X 250

831

3999 X 75

36

843 ±

MIRL Rwy 18-36

HIRL Rwy 9-27

REIL Rwy 9, 18 and 36

4000

CIGIP

027° tr

JJANN

4 NM Holding Pattern

FEDIV

094°

2500

274°

2300

274°

COGNE

1.4

3.2 NM

6 NM

GP 3.00° TCH 45

*LNAV only.

*1.4 NM to RW27

RW27

1.4

3.2 NM

6 NM

CATEGORY	A	B	C	D
LPV DA	1071/40 293 (300-¾)			
LNAV/VNAV DA	1221/50 443 (500-1)			
LNAV MDA	1260/40 482 (500-¾)		1260/50 482 (500-1)	
CIRCLING	1260-1½ 482 (500-1½)	1300-1½ 522 (600-1½)	1380-1¾ 602 (700-1¾)	1580-2½ 802 (900-2½)

EC-2, 31 DEC 2020 to 28 JAN 2021

EC-2, 31 DEC 2020 to 28 JAN 2021