

VOR RWY 9
ELKHART MUNI (EKM)

MISSED APPROACH: Climb to 2500 via GJ R-101 to SKEAT INT/GJ 20 DME and hold.

AWOS-3 124.475	SOUTH BEND APP CON ★ 118.55 257.8	ELKHART TOWER ★ 119.5 (CTAF) 0	GND CON 121.8	CLNC DEL 121.8	UNICOM 122.95
--------------------------	---	--	-------------------------	--------------------------	-------------------------

IAF GIPPER
115.4 GIJ
Chan 101

102°
1 min
282°

2500 NoPT
102°
(9)

1300
1015
962
817
934
1079
1148
1221
1298

SALIM INT
GIJ [9]

1949
1298

R-342
R-032

IAF SKEAT
120.0 SKI
Chan 10

101°
281°

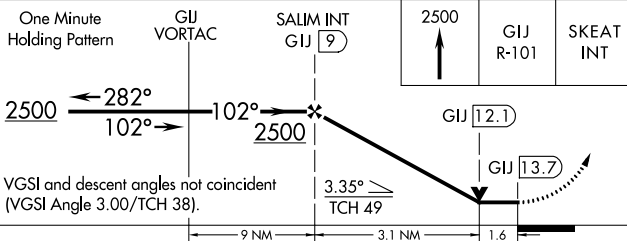
R-101


SKEAT INT
GIJ [20]

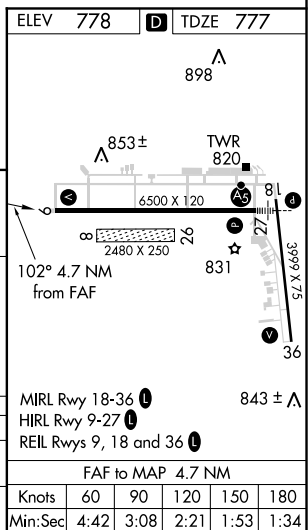
MSA GIJ 25 NM
2300
3000
225°
045°

GOSHEN
113.7 GSH
Chan 84

ELEV 778	TDZE 777
	898



CATEGORY	A	B	C	D
S-9	1340-1	563 (600-1)	1340-1½ 563 (600-1½)	1340-1¾ 563 (600-1¾)
 CIRCLING	1340-1	562 (600-1)	1380-1¾ 602 (700-1¾)	1580-2½ 802 (900-2½)



EC-2, 31 DEC 2020 to 28 JAN 2021

EC-2, 31 DEC 2020 to 28 JAN 2021