

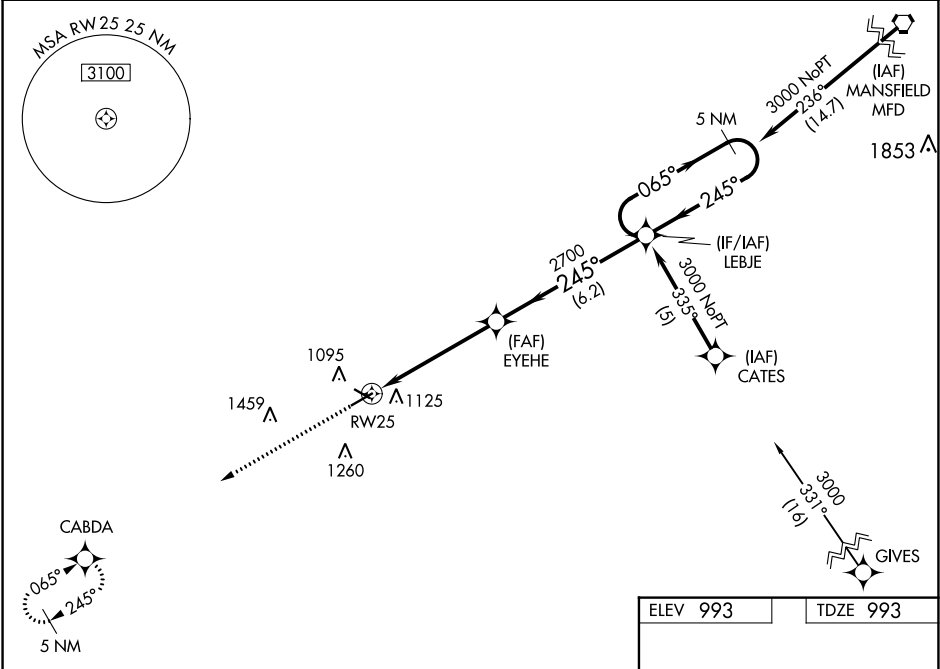
WAAS CH 62904 W25A	APP CRS 245°	Rwy Idg TDZE Apt Elev	5000 993 993
--	------------------------	-----------------------------	---

RNAV (GPS) RWY 25

MARION MUNI (MNN)

RNP APCH.	MISSED APPROACH: Climb to 2600 direct CABDA and hold.
<p>⚠ For uncompensated Baro-VNAV systems, LNAV/VNAV NA below -16°C (4°F) or above 54°C (130°F). Baro-VNAV and VDP NA when using Ohio State University altimeter setting. Rwy 25 helicopter visibility reduction below ¾ SM NA. When local altimeter setting not received, use Ohio State University altimeter setting and increase all DAs 87 feet and all MDAs 100 feet.</p>	

ASOS 119.975	CLEVELAND APP CON ★ 124.2 360.65	CLNC DEL 126.8	UNICOM 122.8 (CTAF) 0
------------------------	--	--------------------------	---------------------------------



2600 ↑ CABDA	VGSI and RNAV glidepath not coincident (VGSI Angle 3.00/TCH 31).		5 NM Holding Pattern	
* LNAV only.			GP 3.00° TCH 40	
CATEGORY	A	B	C	D
LPV DA	1334-1¼ 341 (400-1¼)			
LNAV/ VNAV DA	1443-1½ 450 (500-1½)			
LNAV MDA	1460-1 467 (500-1)		1460-1½ 467 (500-1½)	
CIRCLING	1480-1 487 (500-1)	1500-1 507 (600-1)	1540-1¾ 547 (600-1¾)	1560-2 567 (600-2)

