

WAAS CH <b>93604</b> <b>W07A</b>	APP CRS <b>065°</b>	Rwy Idg TDZE <b>990</b> Apt Elev <b>993</b>
--	------------------------	---

RNAV (GPS) RWY 7

MARION MUNI (MNN)

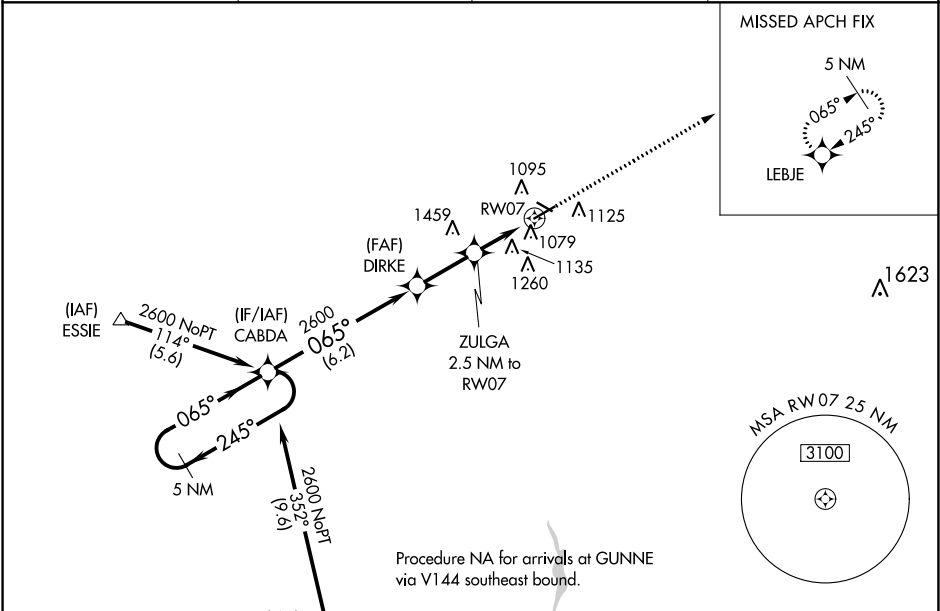
▼

▲

If local altimeter setting not received, use Ohio State University altimeter setting and increase LPV DA 87 feet, LNAV/VNAV DA 195 feet, and all MDAS 100 feet.  
Baro-VNAV NA when using Ohio State University altimeter setting. For uncompensated Baro-VNAV systems, LNAV/VNAV NA below -16°C (4°F) or above 46°C (114°F).  
Visibility reduction by helicopters NA. DME/DME RNP-0.3 NA.

MISSED APPROACH:  
Climb to 3000 direct  
LEBJE and hold.

ASOS <b>119.975</b>	CLEVELAND APP CON ★ <b>124.2 360.65</b>	CLNC DEL <b>126.8</b>	UNICOM <b>122.8 (CTAF) 0</b>
------------------------	--	--------------------------	---------------------------------



5 NM Holding Pattern

VGSI and RNAV glidepath not coincident (VGSI Angle 3.00/TCH 24).

3000

LEBJE

CABDA

DIRKE

ZULGA 2.5 NM to RW07

\*LNAV only.

\*1820

RW07

2600 ← 245°

065° →

2600

GP 3.00° TCH 40

6.2 NM

2.4 NM

2.5 NM

CATEGORY	A	B	C	D
LPV DA	1240-1 250 (300-1)			
LNAV/VNAV DA	1379-1½ 389 (400-1½)			
LNAV MDA	1440-1 450 (500-1)	1440-1¼ 450 (500-1¼)	1440-1½ 450 (500-1½)	
CIRCLING	1480-1 487 (500-1)	1500-1 507 (600-1)	1540-1½ 547 (600-1½)	1560-2 567 (600-2)

ELEV 993

TDZE 990

3498 X 100

5000 X 100

1061

065° to RW07

REIL Rwy 7, 13, 25 and 31 0

MIRL Rwy 7-25 and 13-31 0

EC-2, 31 DEC 2020 to 28 JAN 2021

EC-2, 31 DEC 2020 to 28 JAN 2021