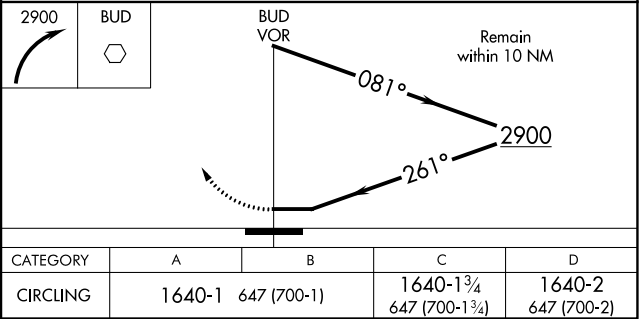
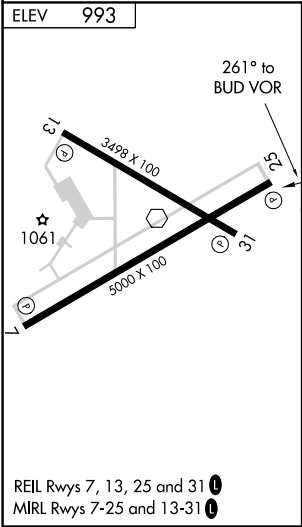
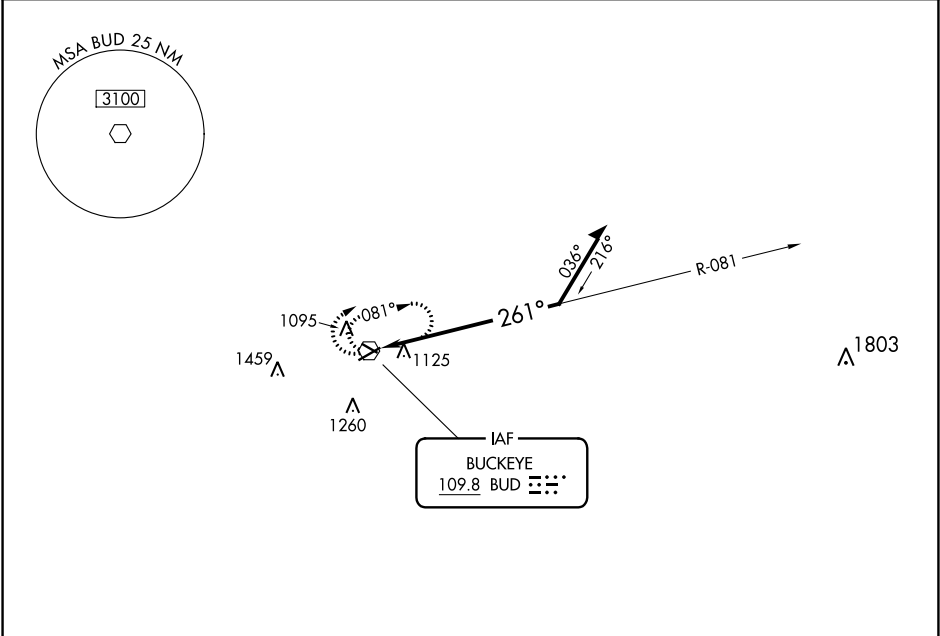


VOR BUD 109.8	APP CRS 261°	Rwy Idg TDZE Apt Elev N/A N/A 993
-------------------------	------------------------	---

VOR-A
MARION MUNI (MNN)

RADAR required for procedure entry.		MISSED APPROACH: Climbing right turn to 2900 in BUD VOR holding pattern.
When local altimeter setting not received, use Ohio State University altimeter setting: increase all MDAs 100 feet and visibility Cats C and D ½ SM.		

ASOS 119.975	CLEVELAND APP CON ★ 124.2 360.65	CLNC DEL 126.8	UNICOM 122.8 (CTAF) 0
------------------------	--	--------------------------	---------------------------------



EC-2, 31 DEC 2020 to 28 JAN 2021

EC-2, 31 DEC 2020 to 28 JAN 2021