

WAAS CH 93929 W36A	APP CRS 005°	Rwy Idg TDZE 862 Apt Elev 866
--	------------------------	---

RNAV (GPS) RWY 36

METTEL FIELD (CEV)

RNP APCH.

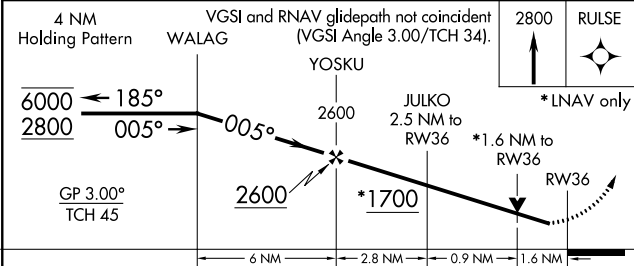
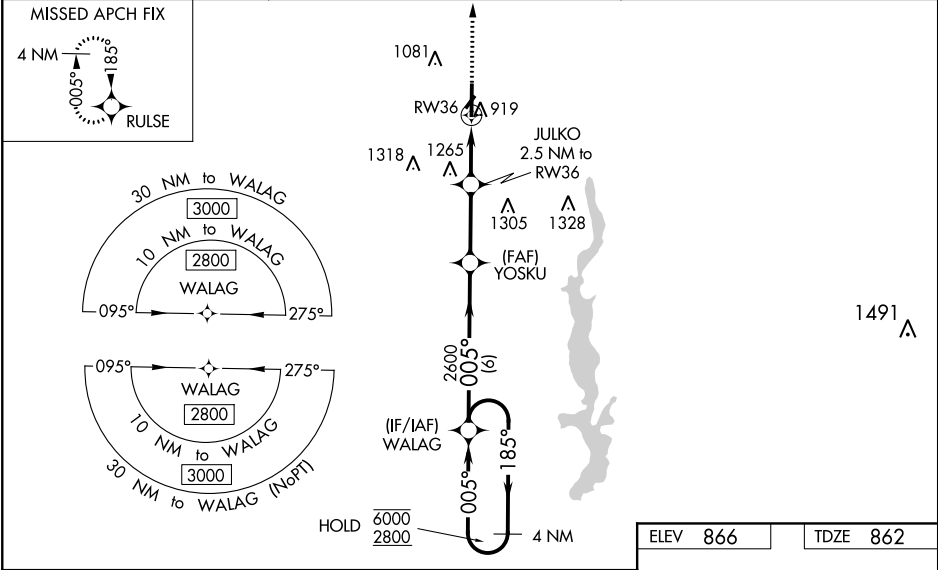
▼

▲ NA

For uncompensated Baro-VNAV systems, LNAV/VNAV NA below -16°C or above 54°C. VDP and Baro VNAV NA when using James M. Cox Dayton Intl altimeter setting. Rwy 36 helicopter visibility reduction below ¾ SM NA. Circling Rwy 4, 22 NA at night. When local altimeter setting not received, use James M Cox Dayton Intl altimeter setting and increase LPV DA to 1253 feet and visibility all Cats to 1½ SM, LNAV/VNAV DA to 1472 feet and visibility all Cats to 1¾ SM, increase all MDA 140 feet and LNAV Cats C/D visibility to 1½ SM, Circling Cat B to 1½ SM, Cat C to 2¾ SM, and Cat D to 3 SM.

MISSED APPROACH: Climb to 2800 direct RULSE and hold.

AWOS-3 118.325	COLUMBUS APP CON 118.425 352.05	UNICOM 122.8 (CTAF) 0
--------------------------	---	---------------------------------



CATEGORY	A	B	C	D
LPV DA	1132-2⁄8 270 (300-2⁄8)			
LNAV/VNAV DA	1351-13⁄8 489 (500-13⁄8)			
LNAV MDA	1400-1 538 (600-1)	1400-1½ 538 (600-1½)		
CIRCLING	1440-1 574 (600-1)	1540-1 674 (700-1)	1620-2¼ 754 (800-2¼)	1620-2½ 754 (800-2½)

