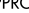
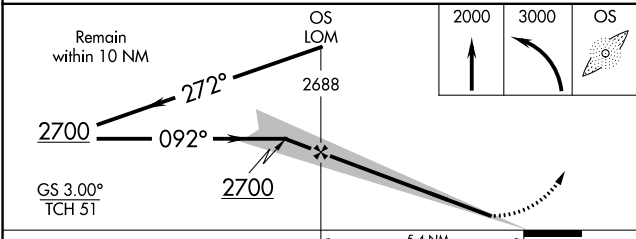
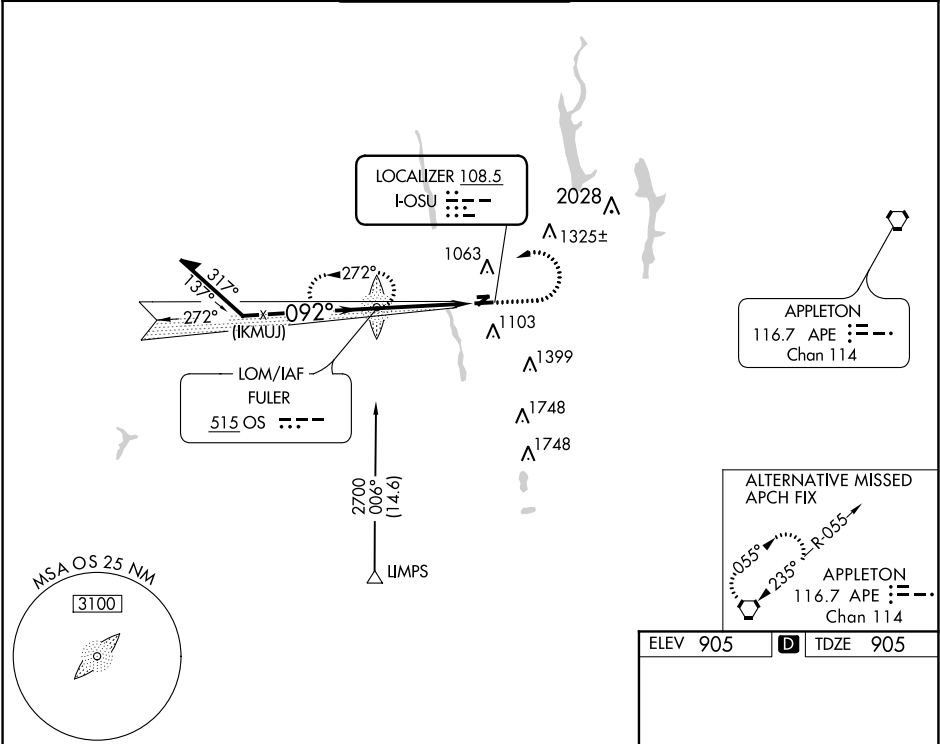


LOC I-OSU 108.5	APP CRS 092°	Rwy Idg TDZE Apt Elev	5004 905 905
---------------------------	------------------------	-----------------------------	---

ILS or LOC RWY 9R
OHIO STATE UNIVERSITY (OSU)

ADF required for procedure entry. ADF required.				<div>MALSR</div> <div></div>	MISSED APPROACH: Climb to 2000 then climbing left turn to 3000 direct FULER LOM and hold.	
<div><div><div>▼</div><div>▲</div></div><div>When local altimeter setting not received, use John Glenn Columbus Intl altimeter setting and increase all DA 35 feet and all MDA 40 feet. Increase S-LOC 9R Cat C/D and Circling Cat C visibility $\frac{1}{8}$ mile. Circling Rwy 23 NA at night.</div></div>						
ATIS 121.35	COLUMBUS APP CON 125.95 317.775	STATE TOWER ★ 118.8 (CTAF) 0 254.325	GND CON 121.7	CLNC DEL 121.7	UNICOM 122.95	



ELEV 905	D	TDZE 905
REIL Rwy 27L HIRL Rwy 9R-27L MIRL Rwy 9L-27R		
FAF to MAP 5.4 NM		
Knots	60	90 120 150 180
Min:Sec	5:24	3:36 2:42 2:10 1:48