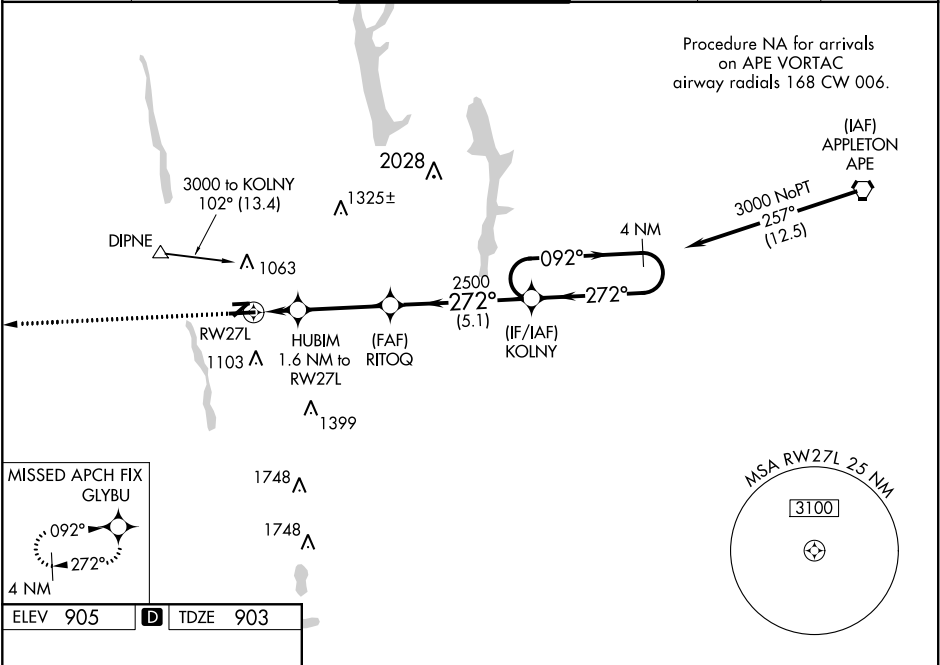


WAAS CH 45720 W27A	APP CRS 272°	Rwy Idg TDZE Apt Elev	5004 903 905
--	------------------------	-----------------------------	---

RNAV (GPS) RWY 27L
OHIO STATE UNIVERSITY (OSU)

RNP APCH.	Baro-VNAV NA when using John Glenn Columbus Intl altimeter setting. For uncompensated Baro-VNAV systems, LNAV/VNAV NA below -16°C or above 38°C. When local altimeter setting not received, use John Glenn Columbus Intl altimeter setting and increase all DA 35 feet and all MDA 40 feet, increase LNAV/VNAV all Cats and LNAV Cats C/D visibility ½ mile. Circling Rwy 23 NA at night. Rwy 27L helicopter visibility reduction below ¾ SM NA.	MISSED APPROACH: Climb to 3200 direct GLYBU and hold.
-----------	--	--

ATIS 121.35	COLUMBUS APP CON 125.95 317.775	STATE TOWER ★ 118.8 (CTAF) 0 254.325	GND CON 121.7	CLNC DEL 121.7	UNICOM 122.95
-----------------------	---	--	-------------------------	--------------------------	-------------------------



<p>REIL Rwy 27L HIRL Rwy 9R-27L MIRL Rwy 9L-27R</p>	3200	GLYBU	VGSI and RNAV glidepath not coincident (VGSI Angle 3.00/TCH 28)		4 NM Holding Pattern
	*LNAV only.	HUBIM 1.6 NM to RW27L	RITOQ 2500	KOLNY	3000
		*1420	2500	092°	272°
		1.6 NM	3.3 NM	5.1 NM	GP 3.00° TCH 45
	CATEGORY	A	B	C	D
LPV DA	1153-1 250 (300-1)				
LNAV/VNAV DA	1199-1 296 (300-1)				
LNAV MDA	1280-1	377 (400-1)	1280-1½	377 (400-1½)	
CIRCLING	1380-1	475 (500-1)	1420-1½ 515 (600-1½)	1460-2 555 (600-2)	

EC-2, 31 DEC 2020 to 28 JAN 2021

EC-2, 31 DEC 2020 to 28 JAN 2021