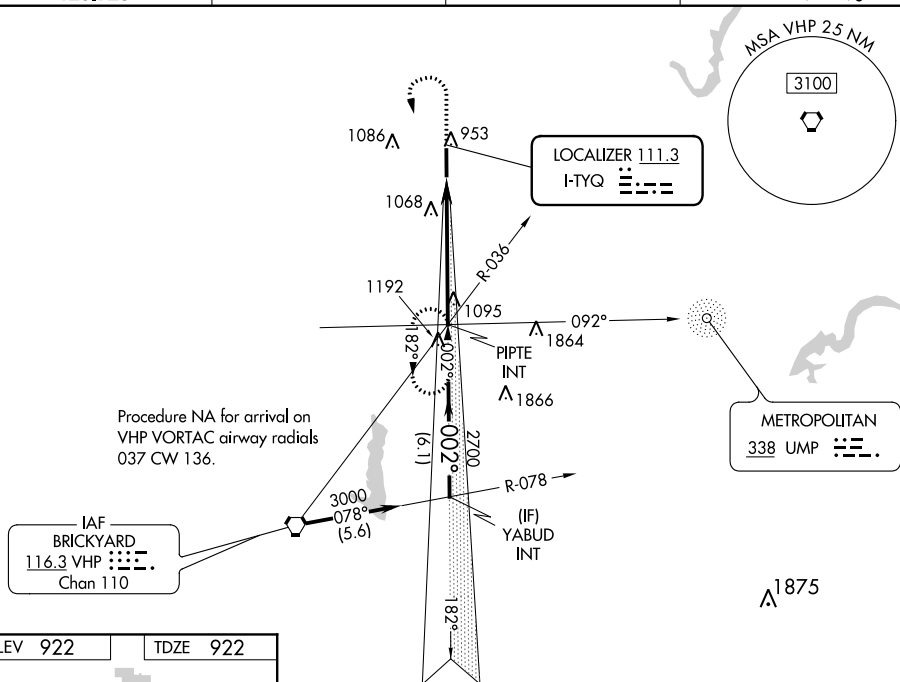


ILS or LOC RWY 36
INDIANAPOLIS EXECUTIVE (TYQ)

T Autopilot coupled approach NA below 1900. When local altimeter setting not received, use Indianapolis Intl altimeter setting and increase DA 1184 feet and all visibilities $\frac{1}{8}$ SM, increase all MDAs 80 feet and visibility Cats C and D, and Circling Cat C visibility $\frac{1}{4}$ SM.

MISSED APPROACH: Climb to 2200 then climbing left turn to 3000 on heading 160° and on I-TYQ LOC south course (182°) to PIPTE INT and hold.

AWOS-3PT 120.725	INDIANAPOLIS APP CON 124.65 127.15 317.8	GCO 121.725	UNICOM 123.05 (CTAF) 0
----------------------------	--	-----------------------	----------------------------------



2200	3000	I-TYQ S crs	PIPTE INT	VGS1 and ILS glidepath not coincident (VGS1 Angle 3.00°/TCH 53).	
CATEGORY	A	B	C	D	
S-ILS 36	1 122- $\frac{3}{4}$ 200 (200- $\frac{3}{4}$)				
S-LOC 36	1400-1	478 (500-1)	1400-1 $\frac{3}{8}$	478 (500-1 $\frac{3}{8}$)	
C CIRCLING	1400-1	478 (500-1)	1400-1 $\frac{1}{2}$ 478 (500-1 $\frac{1}{2}$)	1480-2 558 (600-2)	