

(MAREO5.MAREO) 20086
MAREO FIVE DEPARTURE

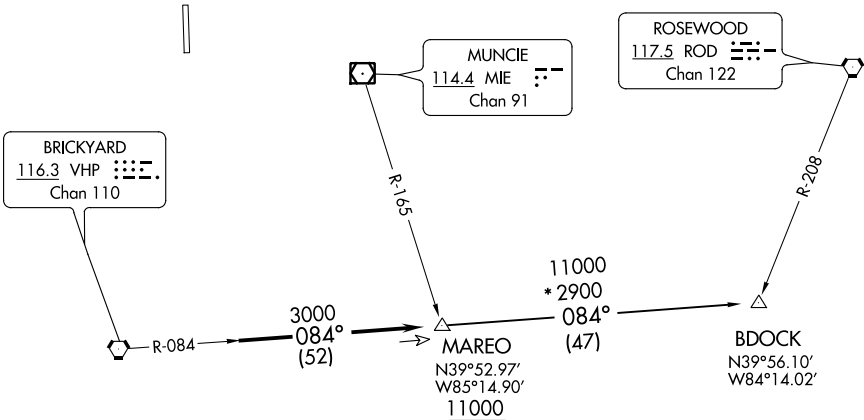
AL-5438 (FAA)

INDIANAPOLIS EXECUTIVE (TYQ)
INDIANAPOLIS, INDIANA

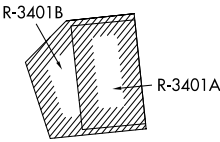
AWOS-3PT
120.725
INDIANAPOLIS DEP CON
124.65 127.15 317.8

TAKEOFF MINIMUMS
Rwy 18, 36: Standard.

TOP ALTITUDE:
ASSIGNED BY ATC



- NOTE: RADAR required.
NOTE: Select appropriate localizer/DME frequency/channel prior to departure.
NOTE: Turbojets accelerate to 250K until reaching 10000, if unable advise ATC.
NOTE: Assigned to aircraft with a requested altitude of 11000 or above.



NOTE: Chart not to scale.



DEPARTURE ROUTE DESCRIPTION

DEPARTING ALL OTHER AUTHORIZED RUNWAYS: Climb on assigned heading to assigned altitude. Thence....
....expect RADAR vectors to join VHP R-084 to MAREO INT then via transition or assigned route. Expect clearance to requested altitude ten minutes after departure.
BDOCK TRANSITION (MAREO5.BDOCK): From over MAREO INT via VHP R-084 to BDOCK INT.