

(ROCKY1.ROCKY) 18032
ROCKY ONE DEPARTURE

AL-5438 (FAA)

INDIANAPOLIS EXECUTIVE (TYQ)
INDIANAPOLIS, INDIANA

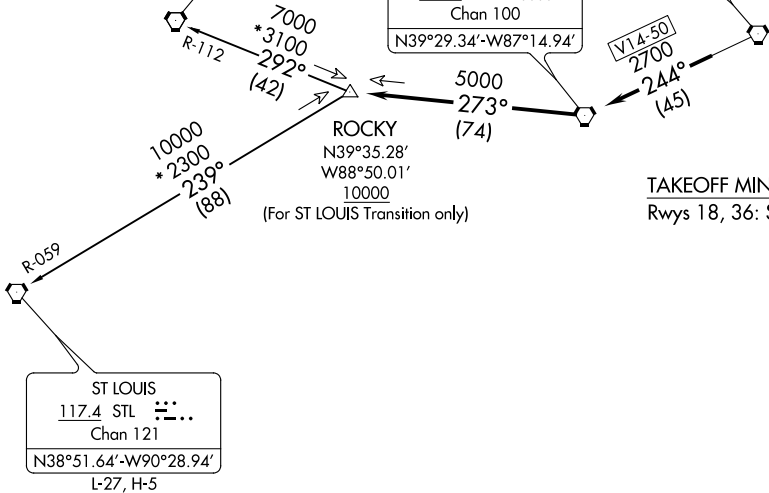
AWOS-3PT
120.725
INDIANAPOLIS DEP CON
124.65 127.15 317.8

TOP ALTITUDE:
ASSIGNED BY ATC

SPINNER
112.7 SPI
Chan 74
N39°50.38'-W89°40.66'
L-27, H-5

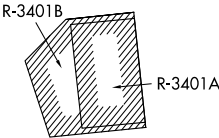
TERRE HAUTE
115.3 TTH
Chan 100
N39°29.34'-W87°14.94'

BRICKYARD
116.3 VHP
Chan 110



TAKEOFF MINIMUMS
Rwys 18, 36: Standard.

- NOTE: RADAR required.
- NOTE: Select appropriate localizer/DME frequency/channel prior to departure.
- NOTE: Turbojets accelerate to 250K until reaching 10000, if unable advise ATC.
- NOTE: Assigned to aircraft with a requested altitude of 11000 or above.



NOTE: Chart not to scale.



DEPARTURE ROUTE DESCRIPTION

DEPARTING ALL OTHER AUTHORIZED RUNWAYS: Climb on assigned heading to assigned altitude. Thence

. . . . expect RADAR vectors to join VHP R-244 to TTH VORTAC, then via TTH R-273 to ROCKY INT then via transition or assigned route. Expect clearance to requested altitude ten minutes after departure.

SPINNER TRANSITION (ROCKY1.SPI): From over ROCKY INT on SPI R-112 to SPI VORTAC.
ST LOUIS TRANSITION (ROCKY1.STL): From over ROCKY INT on STL R-059 to STL VORTAC.