


WAAS CH 86806 W27A	APP CRS 272°	Rwy Idg 6500 TDZE 770 Apt Elev 770
----------------------------------------	------------------------	---------------------------------------------------------------

RNAV (GPS) RWY 27
PORTER COUNTY RGNL (VPZ)

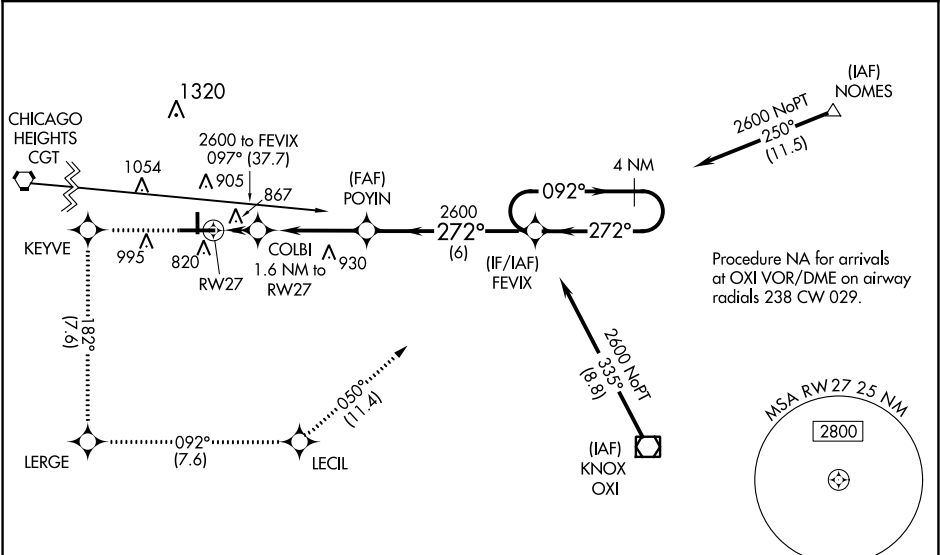
⚠ Baro-VNAV NA when using Lansing Muni altimeter setting. For uncompensated Baro-VNAV systems, procedure NA below -16°C (4°F) or above 54°C (130°F).
⚠ DME/DME RNP-0.3 NA. When local altimeter setting not received, use Lansing Muni altimeter setting and increase all DA 77 feet and all MDA 80 feet, and increase LPV and LNAV/VNAV all Cats, and Circling Cat C visibility ¼ mile. For inoperative MALSR, increase LNAV Cat D visibility to 1¼, when using Lansing Muni altimeter setting increase LPV all Cats visibility to 1¼.

MALSR

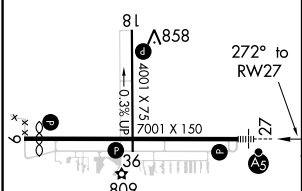


MISSED APPROACH:
Climb to 2600 direct KEYVE and on track 182° to LERGE and on track 092° to LECIL and on track 050° to FEVIX and hold.

ASOS 125.875	SOUTH BEND APP CON ★ 132.05 257.8	CLNC DEL 120.525	UNICOM 122.725 (CTAF) 0
------------------------	---------------------------------------------	----------------------------	-----------------------------------

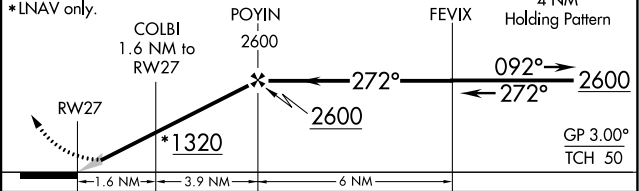


ELEV 770	D	TDZE 770
-----------------	----------	-----------------



2600	KEYVE	LERGE	LECIL	FEVIX	VGSI and descent angles not coincident.
↑	✦	✦	✦	✦	
	tr 182°	tr 092°	tr 050°		

***LNAV only.**



CATEGORY	A	B	C	D
LPV DA		1020-½	250 (300-½)	
LNAV/VNAV DA		1201-1	431 (500-1)	
LNAV MDA	1180-½	410 (500-½)	1180-¾ 410 (500-¾)	1180-1 410 (500-1)
CIRCLING	1260-1 490 (500-1)	1300-1 530 (600-1)	1300-1½ 530 (600-1½)	1360-2 590 (600-2)

EC-2, 31 DEC 2020 to 28 JAN 2021

EC-2, 31 DEC 2020 to 28 JAN 2021