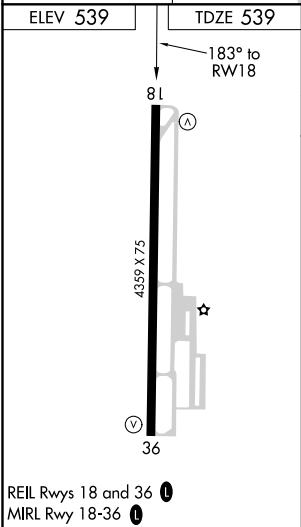
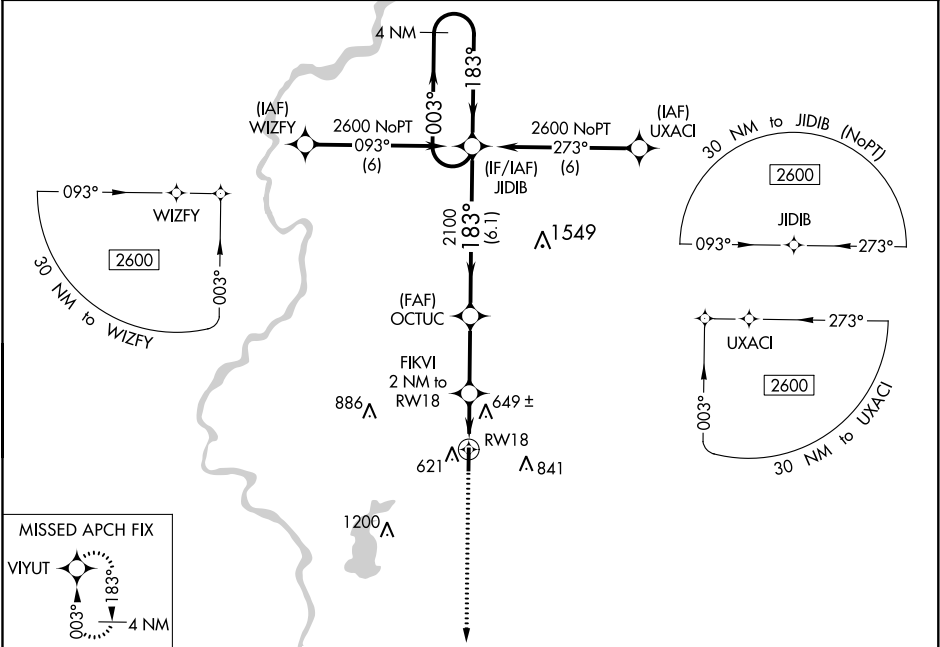


WAAS CH 65936 W18A	APP CRS 183°	Rwy Idg TDZE 539 Apt Elev 539	4359
--	------------------------	---	-------------

RNAV (GPS) RWY 18
SULLIVAN COUNTY (SIV)

NA Baro-VNAV NA. DME/DME RNP-0.3 NA. When Robinson altimeter setting is not received, use Terre Haute Intl-Hulman Field altimeter setting and increase all DA/MDA 20 feet.	MISSED APPROACH: Climb to 2500 direct VIYUT and hold.
---	--

RSV AWOS-3 120.5	HULMAN APP CON 119.25 339.8	UNICOM 122.8 (CTAF) 0
----------------------------	---------------------------------------	---------------------------------



--	--	--	--	--

EC-2, 31 DEC 2020 to 28 JAN 2021

EC-2, 31 DEC 2020 to 28 JAN 2021