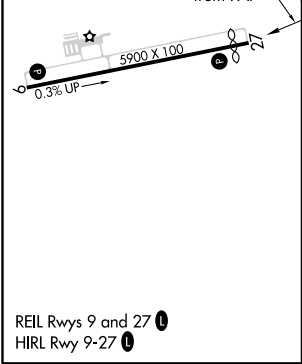
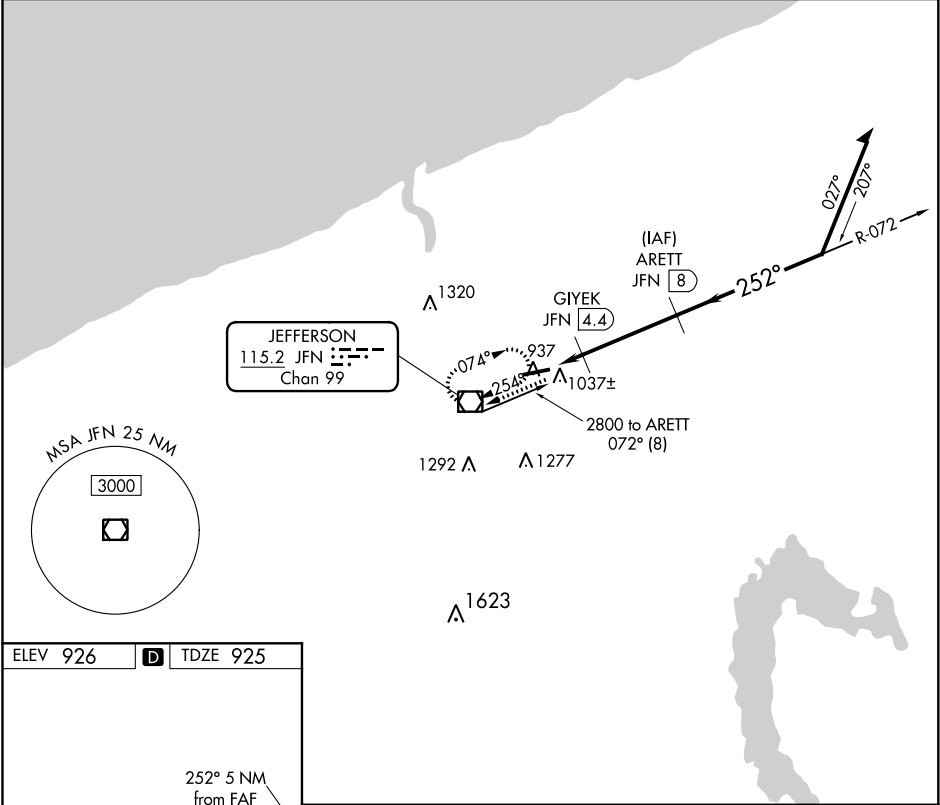





VOR/DME JFN	APP CRS	Rwy Idg	5100
115.2	252°	TDZE	925
Chan 99		Apt Elev	926

VOR RWY 27
NORTHEAST OHIO RGNL (HZY)

DME Required. RADAR Required for Procedure Entry.		MISSED APPROACH: Climb to 2800 direct JFN VOR/DME and hold, continue climb-in-hold to 2800.	
Rwy 27 helicopter visibility reduction below 1 SM NA. Straight-in Rwy 27 NA at night.			
ASOS 118.325	BUFFALO APP CON ★ 121.0	UNICOM 122.8 (CTAF)	123.3 0



2800	JFN	ARETT JFN (8)	Remain within 10 NM	
				
		GIYEK JFN (4.4)	$\triangle 3.03^\circ$ TCH 45	2800
JFN (3)		1420	2600	252°
	1.4 NM	3.7 NM		
CATEGORY	A	B	C	D
S-27	1300-1 375 (400-1)			
 CIRCLING	1340-1 414 (500-1)	1380-1 454 (500-1)	1500-1½ 574 (600-1½)	1580-2 654 (700-2)