

WAAS CH 66028 W27A	APP CRS 274°	Rwy Idg TDZE 777 Apt Elev 781
----------------------------------------	------------------------	---------------------------------------------------

RNAV (GPS) RWY 27

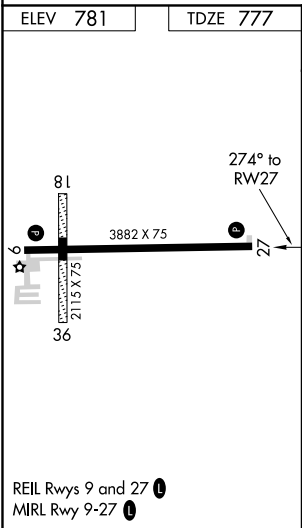
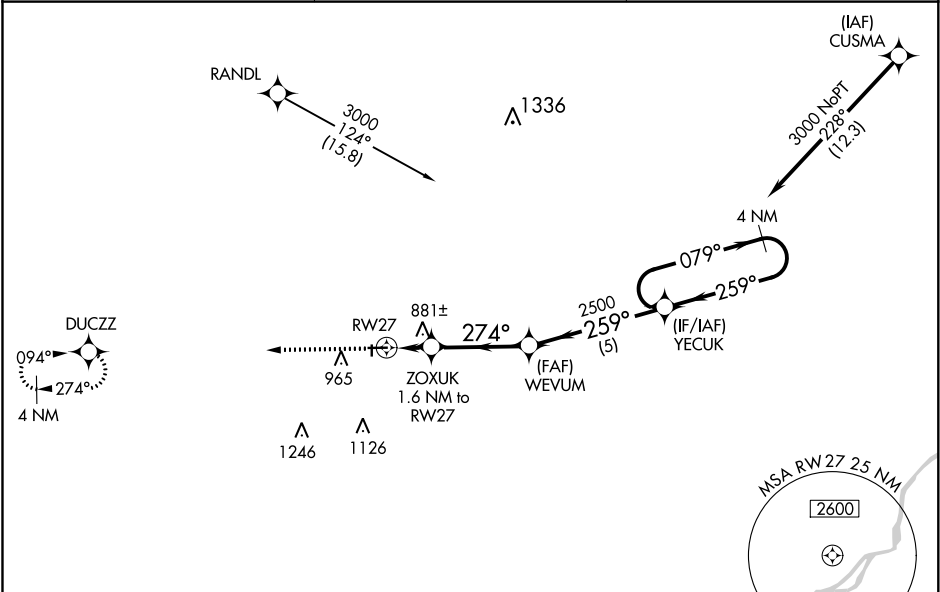
FULTON COUNTY (USE)

RNP APCH.

▼ For uncompensated Baro-VNAV systems, procedure NA below -16°C or above 54°C.
Circling Rwy 18, 36 NA at night. Rwy 27 helicopter visibility reduction below 1 SM NA.
Straight-in Rwy 27 and Circling Rwy 9, 27 at night, operational VGSI required, remain on or above VGSI glidepath until threshold.

MISSED APPROACH:
Climb to 3000 direct
DUCZZ and hold.

AWOS-3P 127.375	TOLEDO APP CON 134.35 317.55	UNICOM 123.0 (CTAF) 0
---------------------------	----------------------------------------	---------------------------------



3000	DUCZZ	VGSI and RNAV glidepath not coincident (VGSI Angle 3.00/TCH 33).				4 NM Holding Pattern
*RNAV only		ZOXUK 1.6 NM to RWY 27	WEVUM 2500	YECUK	079° → 3000	GP 3.10° TCH 55
RWY 27		1.6 NM	3.5 NM	5 NM		
CATEGORY	A	B	C	D		
LPV DA	1092-1 315 (400-1)					
LNAV/VNAV DA	1095-1 318 (400-1)					
LNAV MDA	1180-1	403 (400-1)	1180-1½	403 (400-1½)		
CIRCLING	1320-1	539 (600-1)	1320-1½	539 (600-1½)	1340-2	559 (600-2)