

WAAS CH 61116 W08A	APP CRS 087°	Rwy Idg 4400 TDZE 894 Apt Elev 894
----------------------------------------	------------------------	---------------------------------------------------------------

RNAV (GPS) RWY 8

LAKEFIELD (CQA)

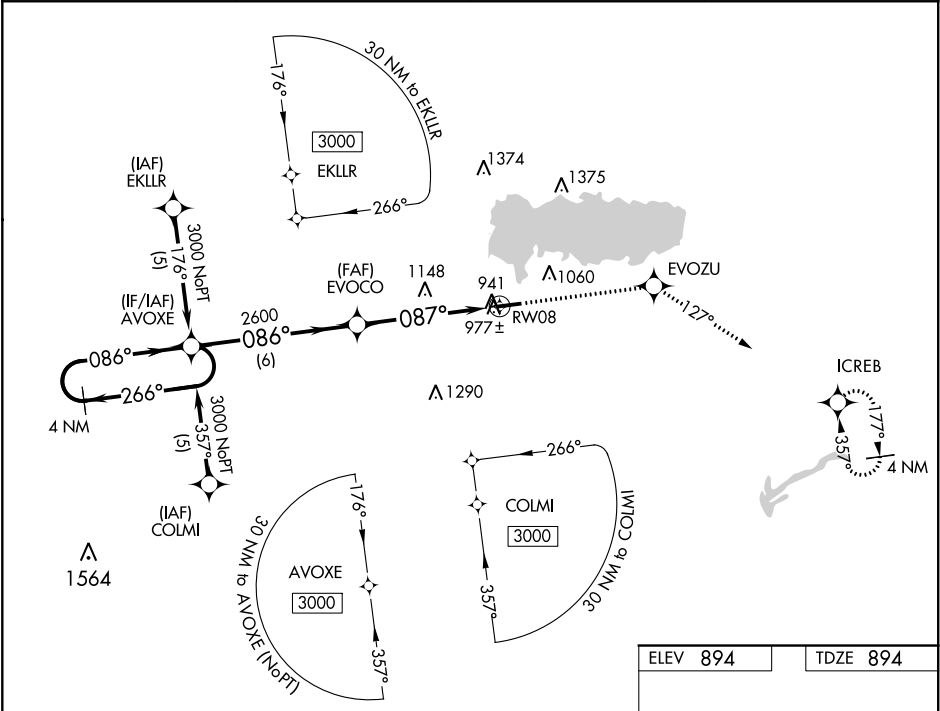
▼

NA

DME/DME RNP-0.3 NA. Visibility reduction by helicopters NA. Baro-VNAV NA. Use Wapakoneta altimeter setting. When not received use James M. Cox Dayton Intl altimeter setting and increase all DA 73 feet and all MDA 80 feet; increase LPV Cats A/B/C visibility ¼ mile, LNAV/VNAV Cats A/B/C visibility ½ mile and LNAV and Circling Cat C visibility ¼ mile.

MISSED APPROACH:
Climb to 3000 direct EVOZU and via track 127° to ICREB and hold.

AXV AWOS-3 128.325	COLUMBUS APP CON 118.425 352.05	UNICOM 122.8 (CTAF)	123.3
------------------------------	-------------------------------------------	-------------------------------	--------------



VGSI and RNAV glidepath not coincident (VGSI Angle 3.00/TCH 20).

4 NM Holding Pattern

3000 ← 266° / 086° →

GP 3.00° TCH 40

AVOXE

EVOCO

2600

086°

087°

RW08

6 NM

5.2 NM

3000

EVOZU

tr 127°

ICREB

4400 X 75

087° to RW08

CATEGORY	A	B	C	D
LPV DA	1221-1¼	327 (400-1¼)		NA
LNAV/VNAV DA	1278-1¼	384 (400-1¼)		NA
LNAV MDA	1440-1	546 (600-1)	1440-1½ 546 (600-1½)	NA
CIRCLING	1440-1	546 (600-1)	1440-1½ 546 (600-1½)	NA

REIL Rwy 8 and 26
MIRL Rwy 8-26