

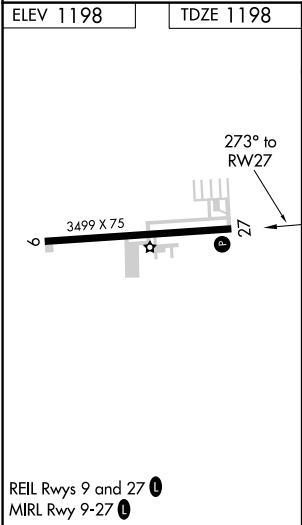
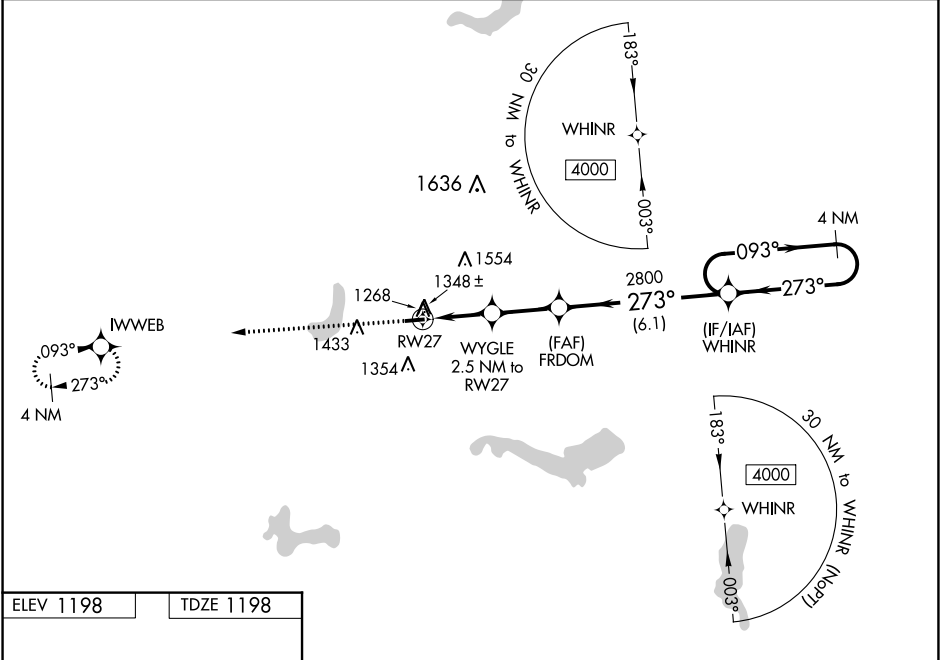
WAAS CH <b>49035</b> <b>W27A</b>	APP CRS <b>273°</b>	Rwy Idg TDZE <b>1198</b> Apt Elev <b>1198</b>
--	------------------------	---

RNAV (GPS) RWY 27  
PORTAGE COUNTY (POV)

**▼** Baro-VNAV NA when using Akron-Canton Rgnl altimeter setting. For uncompensated Baro-VNAV systems, LNAV/VNAV NA below -17°C (2°F) or above 54°C (130°F). DME/DME RNP-0.3 NA.  
**▲** When local altimeter setting not received, use Akron-Canton Rgnl altimeter setting and increase all DA 50 feet and all MDA 60 feet; increase LPV all Cats visibility 1/8 mile, LNAV/VNAV all Cats visibility 1/4 mile and Circling Cat C visibility 1/4 mile. Helicopter visibility reduction below 1 SM NA. Night landing Cat C: Procedure NA.

MISSED APPROACH:  
Climb to 4000 direct  
IWWEB and hold.

AWOS-3 <b>118.675</b>	CLEVELAND APP CON* <b>118.6 371.875</b>	CLNC DEL <b>125.65</b>	UNICOM <b>123.05 (CTAF) 1</b>
--------------------------	--	---------------------------	----------------------------------



4000	IWWEB	FRDOM	WHINR	4 NM Holding Pattern
*LNAV only	WYGLE 2.5 NM to RW27	2800	273°	093° 4000
RW27	*2020	2800	273°	GP 3.00° TCH 43
2.5 NM	2.4 NM	6.1 NM		
CATEGORY	A	B	C	D
LPV DA	1471-1	273 (300-1)		NA
LNAV/VNAV DA	1546-1 1/8	348 (400-1 1/8)		NA
LNAV MDA	1640-1	442 (500-1)	1640-1 3/8 442 (500-1 3/8)	NA
CIRCLING	1740-1 542 (600-1)	1800-1 602 (700-1)	1920-2 722 (800-2)	NA