

APP CRS 329°	Rwy Idg TDZE Apt Elev	4004 811 811
------------------------	-----------------------------	---

RNAV (GPS) RWY 33

INDIANAPOLIS METROPOLITAN (UMP)

<p>▼</p> <p>▲ NA</p>	<p>DME/DME RNP-0.3 NA. When local altimeter setting not received, use Indianapolis Intl altimeter setting and increase all MDA 60 feet and LNAV Cat C visibility ¼ mile. VDP NA when using Indianapolis Intl altimeter setting. Rwy 33 helicopter visibility reduction below ½ SM NA.</p>	<p>MISSED APPROACH: Climb to 2500 direct AYUDA and hold.</p>
------------------------------------	---	--

AWOS-3 119.375	INDIANAPOLIS APP CON 127.15 317.8	CLNC DEL 121.625	UNICOM 123.0 (CTAF) 0
--------------------------	---	----------------------------	--

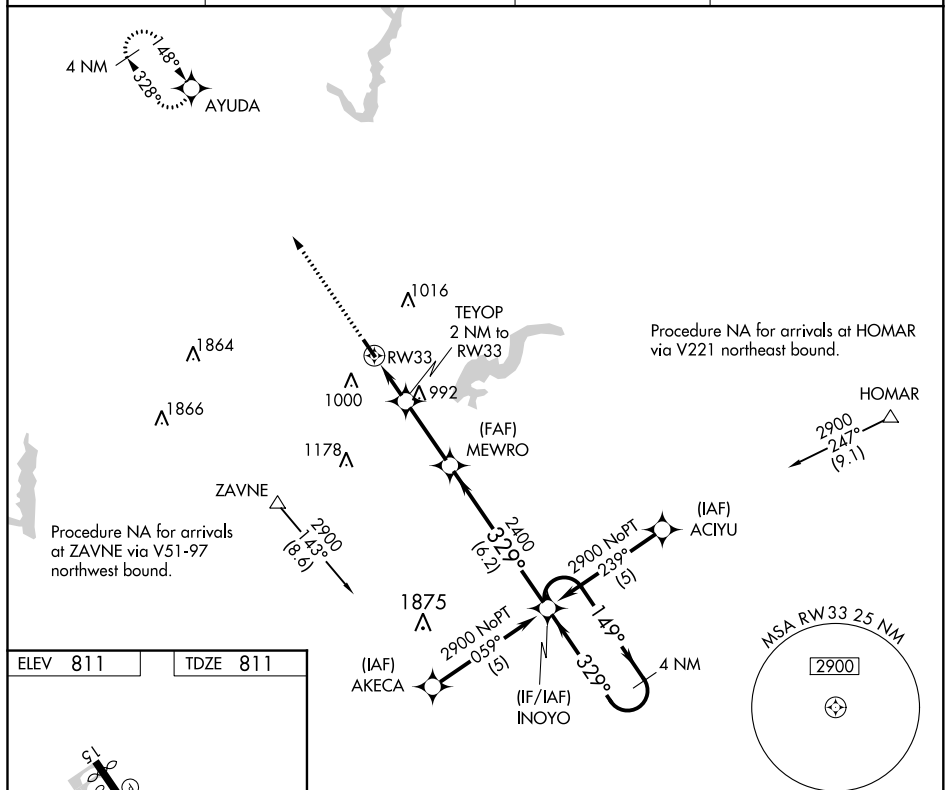


Diagram illustrating the RW33 approach procedure, showing the runway, approach path, and key altitudes and distances.

Runway: 4004 x 100, 1.6% UP.

Approach Path:

- 1.1 NM to RW33
- 0.9 NM
- 2.8 NM
- 6.2 NM

Key Altitudes and Angles:

- 329° to RW33
- 1480
- 149°
- 329°
- 2900
- 4 NM Holding Pattern

CATEGORY	A	B	C	D
LNAV MDA	1260-1	449 (500-1)	1260-1½ 449 (500-1½)	NA
C CIRCLING	1320-1 509 (600-1)	1340-1 529 (600-1)	1340-1½ 529 (600-1½)	NA