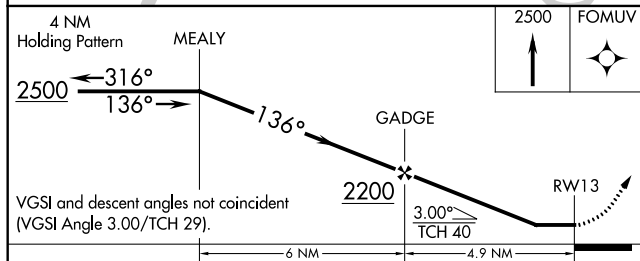
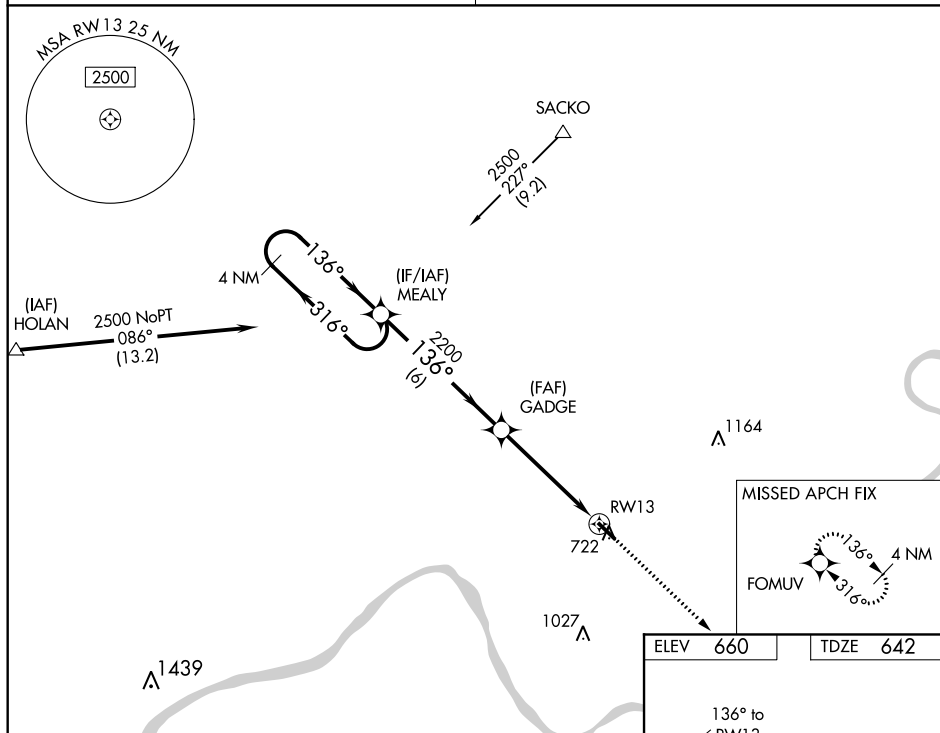


RNAV (GPS) RWY 13
PERRY COUNTY MUNI (TEL)

MISSED APPROACH:
Climb to 2500 direct
FOMUV and hold.

UNICOM
122.7 (CTAF) **L**

CATEGORY	A	B	C	D
LP MDA	1000-1	358 (400-1)	1000-1½ 358 (400-1½)	NA
LNAV MDA	1040-1	398 (400-1)	1040-1¼ 398 (400-1¼)	NA
CIRCLING	1080-1 420 (500-1)	1120-1 460 (500-1)	1120-1½ 460 (500-1½)	NA

ELEV	660		TDZE	642
------	-----	--	------	-----

Diagram of a roof truss section. A vertical line on the left is labeled "RW13". A diagonal member is shown at an angle of 136° to the vertical. The member is labeled "4400 X 75". A small upward arrow indicates a "1.2% Up" slope. A star symbol is located near the bottom right joint.

REIL Rwy 13 and 31 **L**
MIRL Rwy 13-31 **L**

EC-2, 31 DEC 2020 to 28 JAN 2021