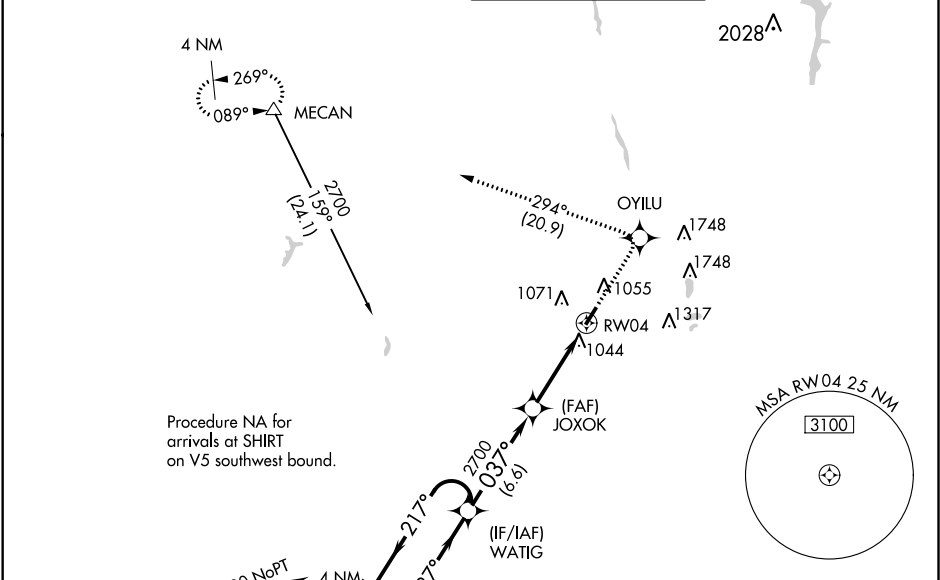


WAAS CH <b>90505</b> <b>W04A</b>	APP CRS <b>037°</b>	Rwy Idg <b>5500</b> TDZE <b>904</b> Apt Elev <b>904</b>
--	------------------------	---

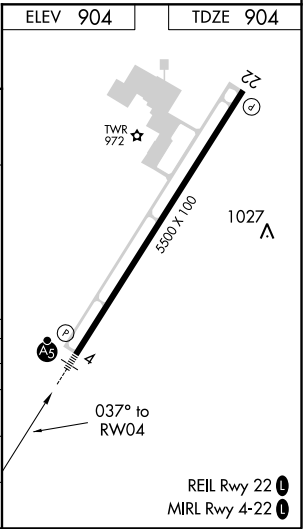
RNAV (GPS) RWY 4  
BOLTON FIELD (TZR)

RNP APCH. <div><div>T</div><div>For uncompensated Baro-VNAV systems, LNAV/VNAV NA below -16°C or above 54°C. For inop ALS, increase LNAV/VNAV all Cats visibility to 1 1/4 SM and LNAV Cats C/D visibility to 1 3/8 SM.</div></div>	MALSR <div><div>A5</div><div></div></div>	MISSED APPROACH: Climb to 3000 direct OYILU and left turn on track 294° to MECAN and hold.
--	--	---

AWOS-3 <b>135.925</b>	COLUMBUS APP CON <b>134.0 279.6</b>	BOLTON TOWER ★ <b>128.1 (CTAF) 0</b>	GND CON <b>121.8</b>
--------------------------	--	---	-------------------------



4 NM Holding Pattern		VGSI and RNAV glidepath not coincident (VGSI Angle 3.00/TCH 25).		3000	OYILU	MECAN
				*LNAV only.		
WATIG		JOXOK				
6000 2700		2700		* 1.4 NM to RWY 04		
GP 3.00° TCH 39		2700		RWY 04		
		6.6 NM		1.4 NM		
CATEGORY	A	B	C	D		
LPV DA	1163-1/2		259 (300-1/2)			
LNAV/VNAV DA	1325-1		421 (500-1)			
LNAV MDA	1360-1/2	456 (500-1/2)	1360-7/8 456 (500-7/8)	1360-1 456 (500-1)		
CIRCLING	1360-1 456 (500-1)	1380-1 476 (500-1)	1380-1 1/2 476 (500-1 1/2)	1500-2 596 (600-2)		



EC-2, 31 DEC 2020 to 28 JAN 2021

EC-2, 31 DEC 2020 to 28 JAN 2021