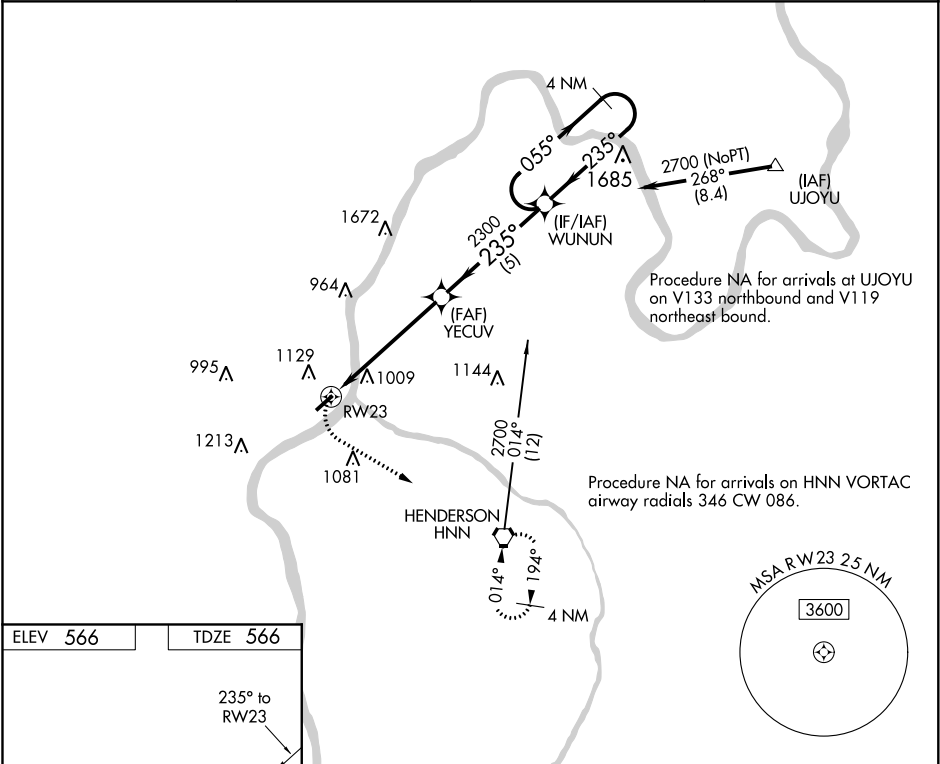


APP CRS	Rwy Idg	3999
235°	TDZE	566
	Apt Elev	566

RNAV (GPS) RWY 23
GALLIA-MEIGS RGNL (GAS)

<p>⚠ DME/DME RNP-0.3 NA. Procedure NA at night. Helicopter visibility reduction below 1 SM NA. When local altimeter setting not received, use Point Pleasant altimeter setting and increase all MDA 40 feet, and increase Circling Cat C visibility ¼ mile.</p>	<p>MISSED APPROACH: Climbing left turn to 2700 direct HNN VORTAC and hold.</p>
------------------------------------------------------------------------------------------------------------------------------------------------------------------------------------------------------------------------------------------------------------------------	-----------------------------------------------------------------------------------------------

AWOS-3 119.925	HUNTINGTON APP CON 128.4 270.1	CLNC DEL 124.55	UNICOM 123.0 (CTAF) 1
-------------------	-----------------------------------	--------------------	---------------------------------



MIRL Rwy 5-23 **1**

REIL Rwy 23 **1**

2700 HNN

VGSI and descent angles not coincident (VGSI Angle 3.00/TCH 40).

4 NM Holding Pattern

YECUV

3.00° TCH 40

2300

235°

WUNUN

4 NM Holding Pattern

055°

235°

2700

CATEGORY	A	B	C	D
LNAV MDA	1360-1 794 (800-1)	1360-1¼ 794 (800-1¼)	1360-2½ 794 (800-2½)	NA
CIRCLING	1440-1¼	874 (900-1¼)	1440-2½ 874 (900-2½)	NA

EC-2, 31 DEC 2020 to 28 JAN 2021

EC-2, 31 DEC 2020 to 28 JAN 2021