

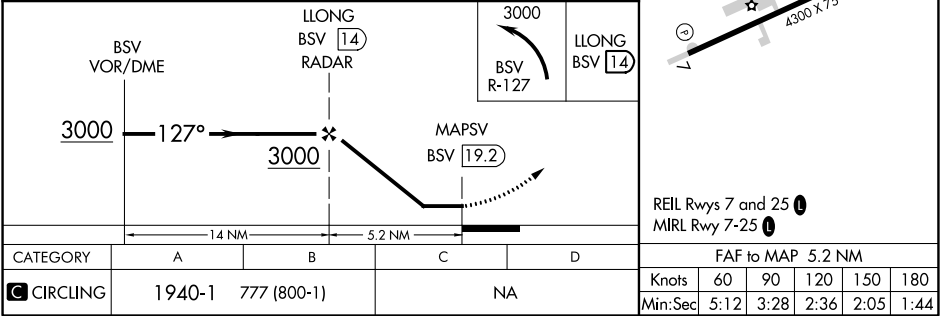
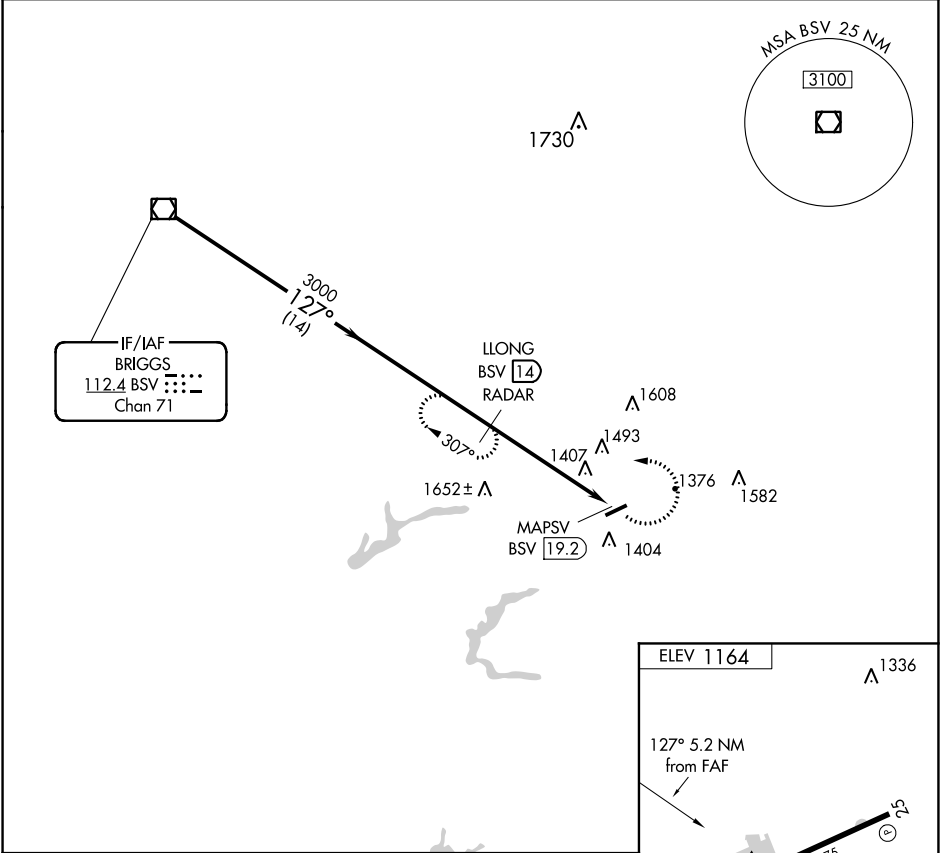
VOR/DME BSV 112.4 Chan 71	APP CRS 127°	Rwy Idg TDZE Apt Elev 1164	N/A N/A 1164
---	------------------------	---	---

VOR-A

CARROLL COUNTY-TOLSON (TSO)

DME or RADAR required.	MISSED APPROACH: Climbing left turn to 3000 on BSV VOR/DME R-127 to LLONG/BSV 14 DME/RADAR and hold.
Procedure NA at night. Use Akron-Canton altimeter setting; when not received, use New Philadelphia altimeter setting and increase MDA 20 feet.	

CLEVELAND APP CON ★ 125.5 371.875	UNICOM 122.7 (CTAF) 0
---	---------------------------------



EC-2, 31 DEC 2020 to 28 JAN 2021

EC-2, 31 DEC 2020 to 28 JAN 2021