

WAAS CH 82041 W10A	APP CRS 096°	Rwy Idg 4201 TDZE 1089 Apt Elev 1090
--	------------------------	---

RNAV (GPS) RWY 10

NEW CASTLE HENRY COUNTY MARLATT FIELD (UWL)

RNP APCH.

T rky 10 helicopter visibility reduction below ¼ SM NA. baro-VNAV NA. Use Anderson
A altimeter setting; when not received, use Muncie altimeter setting and increase LPV DA
NA to 1412, LNAV/VNAV DA to 1437, and all MDA 20 feet; increase LNAV Cat C/D
visibility ½ SM.

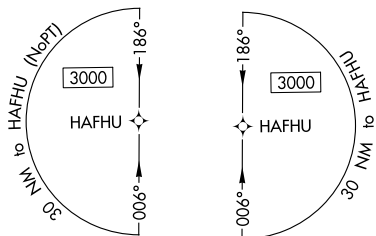
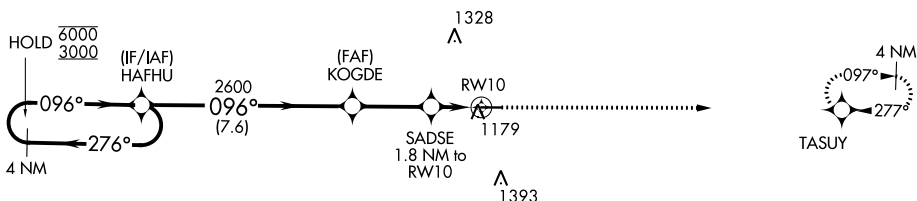
MISSED APPROACH:
Climb to 3000 direct
TASUY and hold.

AID AWOS-3
128.55

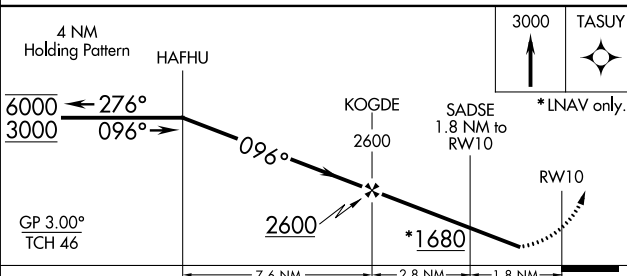
INDIANAPOLIS APP CON
135.45 317.8


UNICOM
123.05 (CTAF) **L**

A1554



ELEV	1090		TDZE	1089
------	------	--	------	------



CATEGORY		A		B		C		D	
LPV	DA	1408-1		319 (400-1)					
LNAV/ VNAV	DA	1433-1		344 (400-1)					
LNAV	MDA	1520-1		431 (500-1)		1520-1¼		431 (500-1¼)	
 CIRCLING		1580-1 490 (500-1)		1600-1 510 (600-1)		1780-2 690 (700-2)		1780-2¼ 690 (700-2¼)	

MIRL Rwy 10-28 **L**
REIL Rwy 10 and 28 **L**

RNAV (GPS) RWY 10