

WAAS CH 70713 W05A	APP CRS 050°	Rwy Idg 5002 TDZE 757 Apt Elev 757
--	------------------------	---

RNAV (GPS) RWY 5

NORTH VERNON (OVO)

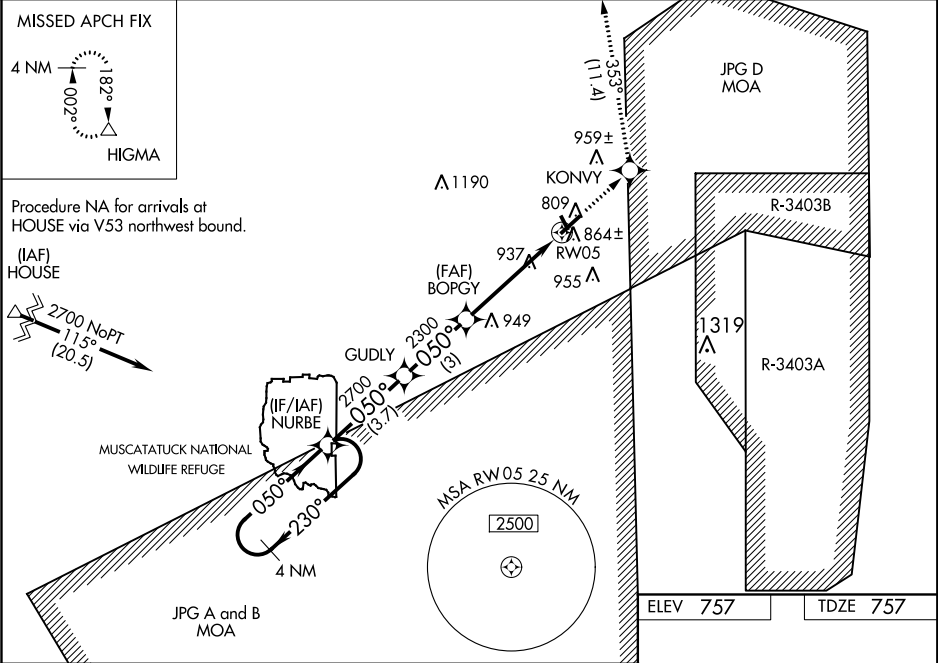
▼

NA

For uncompensated Baro-VNAV systems, LNAV/VNAV NA below -16°C (4°F) or above 54°C (130°F). DME/DME RNP-0.3 NA. When local altimeter setting not received, use Shelbyville altimeter setting and increase all DA 84 feet, all MDA 100 feet. Increase LPV all Cats visibility 1/8 mile, LNAV/VNAV all Cats visibility 1/4 mile, LNAV Cat C visibility 1/4 mile and Circling Cat C 1/8 mile. VDP and Baro-VNAV NA when using Shelbyville altimeter setting. Helicopter visibility reduction below 3/4 SM NA.

MISSED APPROACH:
Climb to 2800 direct KONVY and on track 353° to HIGMA and hold.

AWOS-3 120.625	INDIANAPOLIS CENTER 124.775 269.45	UNICOM 122.7 (CTAF) 0
--------------------------	--	---------------------------------



VGSI and RNAV glidepath not coincident (VGSI Angle 3.00/TCH 34).					
4 NM Holding Pattern	NURBE	GUDLY	2800 ↑ BOPGY	KONVY ✦ tr 353°	HIGMA △ *LNAV only.
CATEGORY	A	B	C	D	
LPV DA	1091-1¼ 334 (400-1¼)		NA		
LNAV/VNAV DA	1116-1¼ 359 (400-1¼)		NA		
LNAV MDA	1200-1 443 (500-1)		1200-13⁄8 443 (500-13⁄8)		NA
CIRCLING	1200-1 443 (500-1)	1220-1 463 (500-1)	1220-1½ 463 (500-1½)		NA