

WAAS CH 45819 W27A	APP CRS 275°	Rwy Idg TDZE 752 Apt Elev 752	5005
--	------------------------	---	-------------

RNAV (GPS) RWY 27

FOSTORIA METROPOLITAN (FZI)

RNP APCH.

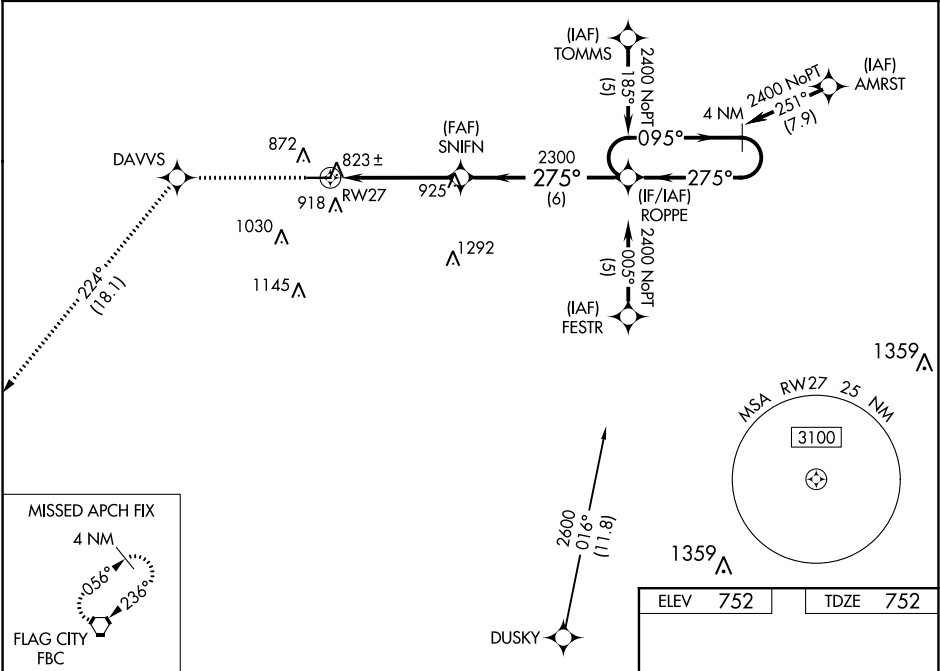
▼

NA

For uncompensated Baro-VNAV systems, LNAV/VNAV NA below -16°C (4°F) or above 54°C (130°F). Baro-VNAV and VDP NA when using Findlay altimeter setting. When local altimeter setting not received, use Findlay altimeter setting and increase all DA 47 feet and all MDA 60 feet, increase LNAV/VNAV all Cats and Circling Cat C visibility ¼ mile.

MISSED APPROACH: Climb to 2500 direct DAVVS and on track 224° to FBC VORTAC and hold.

AWOS-3 124.625	TOLEDO APP CON 126.1 307.0	UNICOM 122.7 (CTAF) 0
--------------------------	--------------------------------------	---------------------------------



2500	DAVVS	tr 224°	FBC
<div>* LNAV only</div> <div><div>1.2 NM</div><div>3.5 NM</div><div>6 NM</div></div>			
LPV	DA	1002-1 250 (300-1)	NA
LNAV/VNAV	DA	1131-1¼ 379 (400-1¼)	NA
LNAV	MDA	1160-1 408 (500-1)	1160-1¼ 408 (500-1¼)
CIRCLING		1280-1 528 (600-1)	1320-1 568 (600-1)

ELEV 752 TDZE 752

GP 3.00°

TCH 40

REIL Rwy 9 and 27 0

MIRL Rwy 9-27 0