

FOSTORIA, OHIO

AL-6133 (FAA)

20310

VORTAC FBC 108.2 Chan 19	APP CRS 051°	Rwy Idg TDZE Apt Elev	N/A N/A 752
---------------------------------------	------------------------	-----------------------------	--

VOR-A
FOSTORIA METROPOLITAN (FZI)

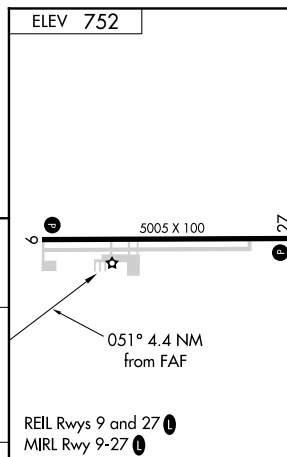
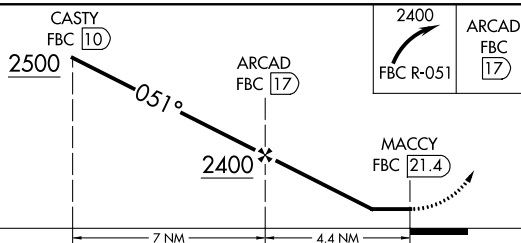
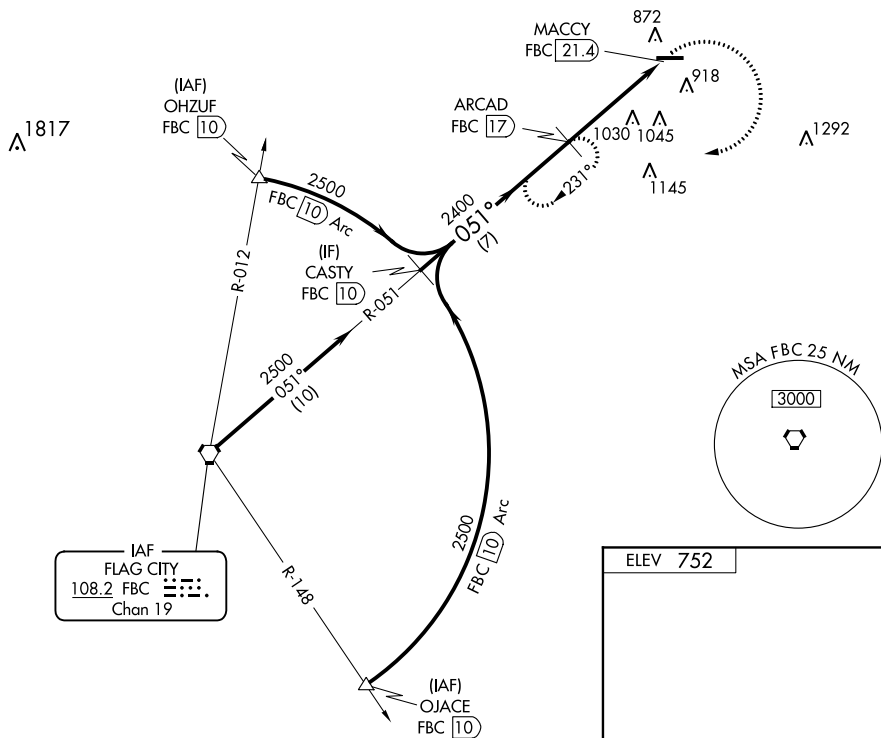
DME required.

T
A

When local altimeter setting not received, use Findlay altimeter setting and increase all MDA 60 feet, and increase Cat C visibility $\frac{1}{4}$ mile.

MISSED APPROACH: Climbing right turn to 2400 on FBC VORTAC R-051 to ARCAD/FBC 17 DME and hold.

AWOS-3 124.625	TOLEDO APP CON 126.1 307.0	UNICOM 122.7 (CTAF) 0
--------------------------	--------------------------------------	---------------------------------



CATEGORY	A	B	C	D	FAF to MAP 4.4 NM					
CIRCLING	1400-1	1400-1¼	1400-1¾	NA	Knots	60	90	120	150	180
	648 (700-1)	648 (700-1¼)	648 (700-1¾)		Min:Sec	4:24	2:56	2:12	1:46	1:28

FOSTORIA, OHIO
Amdt 4C 08OCT20

41°11'N - 83°24'W

FOSTORIA METROPOLITAN (F'ZI)
VOR-A

EC-2, 31 DEC 2020 to 28 JAN 2021

EC-2, 31 DEC 2020 to 28 JAN 2021