

WAAS CH 70527 W18A	APP CRS 182°	Rwy Idg TDZE 698 Apt Elev 698
--	------------------------	---

RNAV (GPS) RWY 18
JASPER COUNTY (R.Z.L.)

RNP APCH.

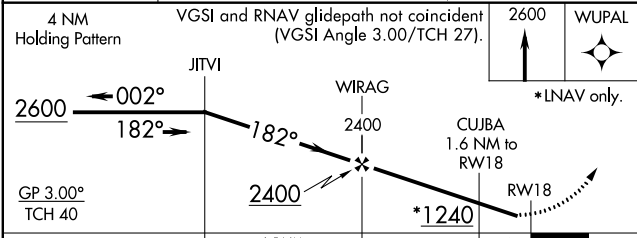
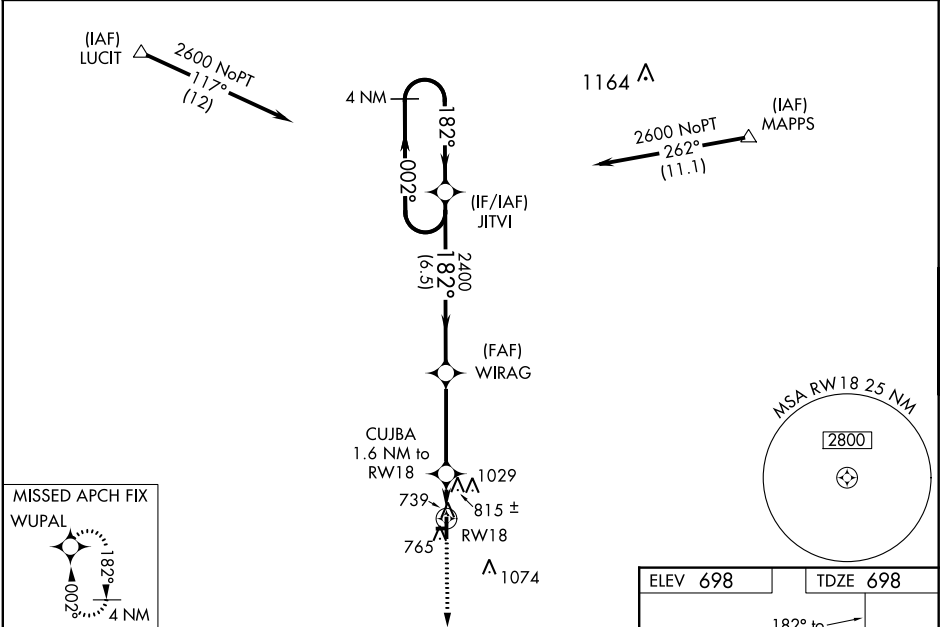
T

A

Baro-VNAV NA when using Knox altimeter setting. For uncompensated Baro-VNAV systems LNAV/VNAV NA below -22°C or above 54°C. When local altimeter setting not received, use Knox altimeter setting and increase all DA 78 feet and all MDA 80 feet. Increase LPV all Cats visibility ¼ mile, LNAV-VNAV all Cats and LNAV and Circling Cat C visibility ½ mile. Rwy 18 helicopter visibility reduction below 1 SM NA. Circling NA to Rwys 9 and 27.

MISSED APPROACH:
Climb to 2600 direct WUPAL and hold.

AWOS-3P 119.175	CHICAGO CENTER 132.5 284.7	UNICOM 122.8 (CTAF) 0
---------------------------	--------------------------------------	---------------------------------



CATEGORY	A	B	C	D
LPV DA	948-1	250 (300-1)		NA
LNAV/VNAV DA	1096-1	398 (400-1)		NA
LNAV MDA	1080-1	382 (400-1)	1080-1	NA
CIRCLING	1120-1	1340-1	1340-1	NA

