

WAAS CH 65734 W27A	APP CRS 272°	Rwy Idg TDZE Apt Elev	5000 861 861
--	------------------------	-----------------------------	---

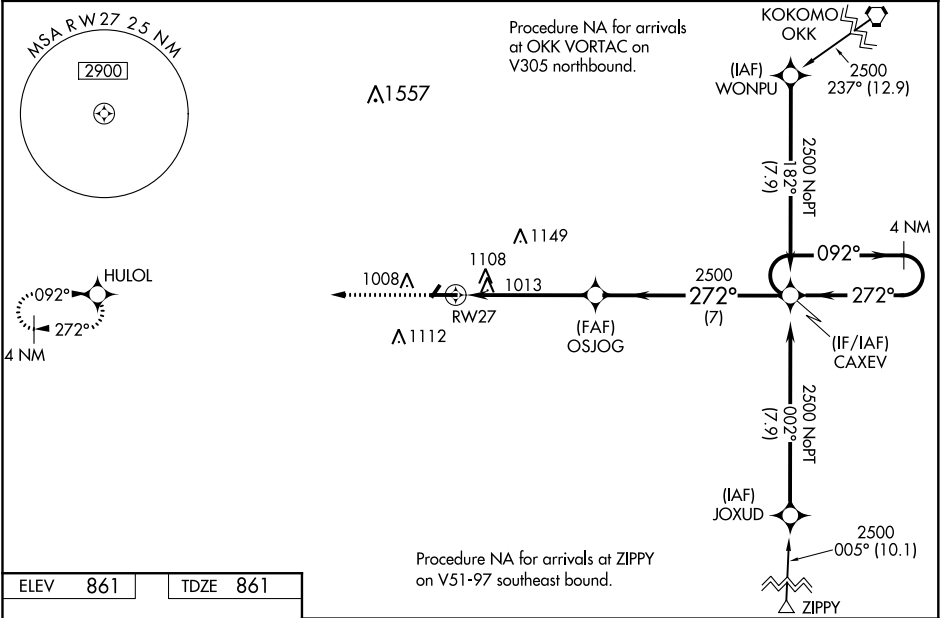
RNAV (GPS) RWY 27
FRANKFORT MUNI (FKR)

NA

Baro-VNAV NA when using Indianapolis Executive altimeter setting. For uncompensated Baro-VNAV systems, LNAV/VNAV NA below -16°C (4°F) or above 54°C (130°F). DME/DME RNP-0.3 NA. VDP NA with Indianapolis Executive altimeter setting. When local altimeter setting not received, use Indianapolis Executive altimeter setting and increase all DA 56 feet and all MDA 60 feet; increase LPV all Cats visibility 1/8 mile, LNAV Cats C/D visibility 1/8 mile, and Circling Cats C/D visibility 1/4 mile.

MISSED APPROACH:
Climb to 2500 direct
HULOL and hold.

AWOS-3 124.325	GRISOM APP CON ★ 123.85 291.675	UNICOM 123.0 (CTAF) 0
--------------------------	---	---------------------------------



ELEV **861** TDZE **861**

MIRL Rwy 9-27 and 4-22 0
REIL Rwy 9 and 27 0

2500	HULOL	VGSI and RNAV glidepath not coincident (VGSI Angle 3.00/TCH 25).		
CATEGORY	A	B	C	D
LPV DA	1111-7/8 250 (300-7/8)			
LNAV/ VNAV DA	1476-2 1/2 615 (700-2 1/2)			
LNAV MDA	1420-1	559 (600-1)	1420-1 5/8	559 (600-1 5/8)
C CIRCLING	1460-1	599 (600-1)	1520-1 3/4 659 (700-1 3/4)	1520-2 659 (700-2)

EC-2, 31 DEC 2020 to 28 JAN 2021

EC-2, 31 DEC 2020 to 28 JAN 2021