

WAAS CH 62834 W09A	APP CRS 092°	Rwy Idg TDZE Apt Elev	5000 856 861
--	------------------------	-----------------------------	---

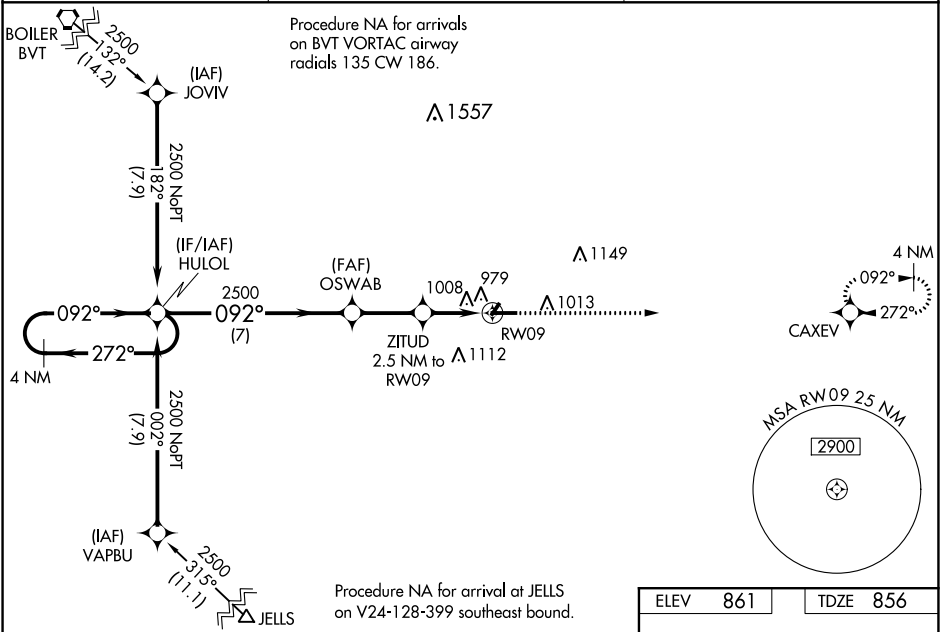
RNAV (GPS) RWY 9
FRANKFORT MUNI (F'KR)

NA

Baro-VNAV NA when using Indianapolis Executive altimeter setting. For uncompensated Baro-VNAV systems, LNAV/VNAV NA below -16°C (4°F) or above 54°C (130°F). DME/DME RNP-0.3 NA. VDP NA with Indianapolis Executive altimeter setting. When local altimeter setting not received, use Indianapolis Executive altimeter setting: increase LPV DA to 1162 feet and visibility 1/8 SM all Cats; increase LNAV/VNAV DA to 1245 feet and visibility 1/8 SM all Cats; increase all MDAs 60 feet and LNAV and Circling Cats C/D visibilities 1/4 SM.

MISSED APPROACH:
Climb to 2500 direct
CAXEV and hold.

AWOS-3 124.325	GRISOM APP CON ★ 123.85 291.675	UNICOM 123.0 (CTAF) 0
--------------------------	---	---------------------------------



VGSI and RNAV glidepath not coincident (VGSI Angle 3.00/TCH 25).

4 NM Holding Pattern

HULOL

OSWAB

ZITUD 2.5 NM to RWY 09

*LNAV only.

*1.1 NM to RWY 09

*1.4 NM to RWY 09

*1.1 NM to RWY 09

GP 3.00° TCH 40°

7 NM

2.5 NM

1.4 NM

1.1 NM

CATEGORY	A	B	C	D
LPV DA	1106-7/8 250 (300-7/8)			
LNAV/VNAV DA	1189-1 333 (400-1)			
LNAV MDA	1260-1 404 (400-1)	1260-1 1/8 404 (400-1 1/8)		
CIRCLING	1460-1 599 (600-1)	1520-1 3/4 659 (700-1 3/4)		1520-2 659 (700-2)

ELEV 861 TDZE 856

MIRL Rwy 4-22 and 9-27 0

REIL Rwy 9 and 27 0

EC-2, 31 DEC 2020 to 28 JAN 2021

EC-2, 31 DEC 2020 to 28 JAN 2021