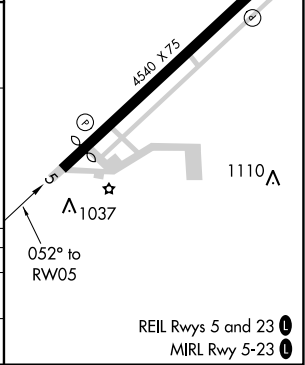
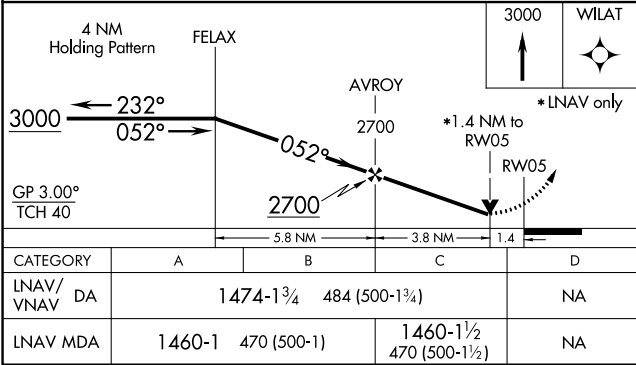
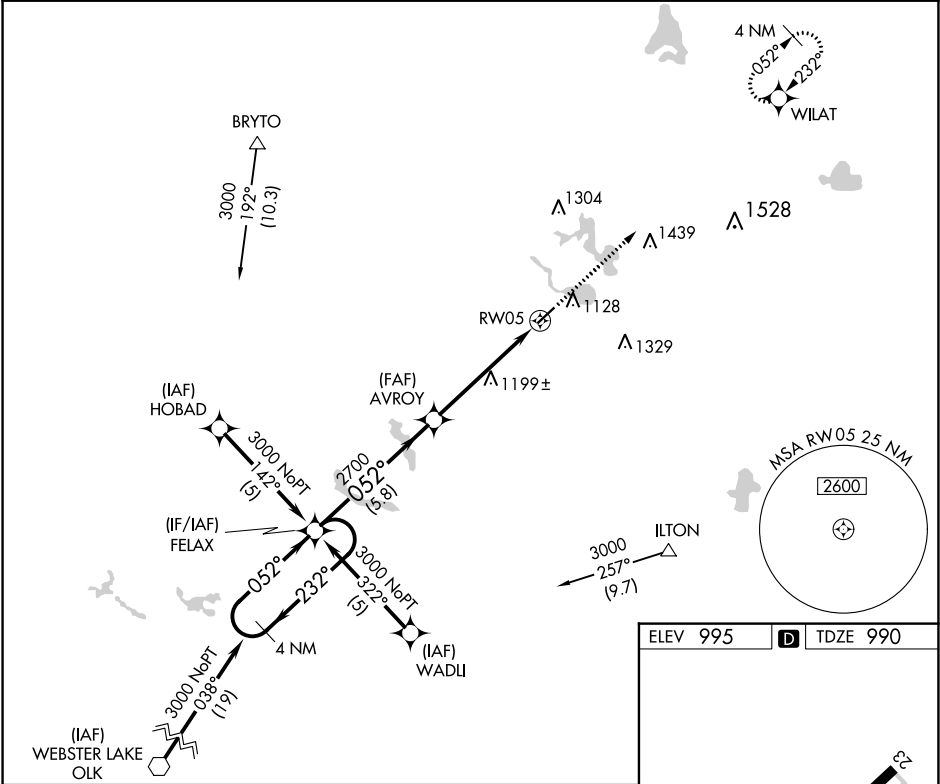


APP CRS	Rwy Idg	4000
052°	TDZE	990
	Apt Elev	995

RNAV (GPS) RWY 5
TRI-STATE STEUBEN COUNTY (ANQ)

RNP APCH.	MISSED APPROACH: Climb to 3000 direct WILAT and hold.
▲ NA For uncompensated Baro-VNAV systems, LNAV/VNAV NA below -16°C or above 54°C. Rwy 5 helicopter visibility reduction below ¾ SM NA.	

AWOS-3 118.175	FORT WAYNE APP CON 127.2 284.6 (SW/NW) 132.15 284.6 (SE/NE)	UNICOM 123.075 (CTAF) 0
-------------------	---	----------------------------



EC-2, 31 DEC 2020 to 28 JAN 2021

EC-2, 31 DEC 2020 to 28 JAN 2021