

WAAS CH 40238 W27A	APP CRS 273°	Rwy Idg TDZE Apt Elev	3641 708 708
--	------------------------	-----------------------------	---

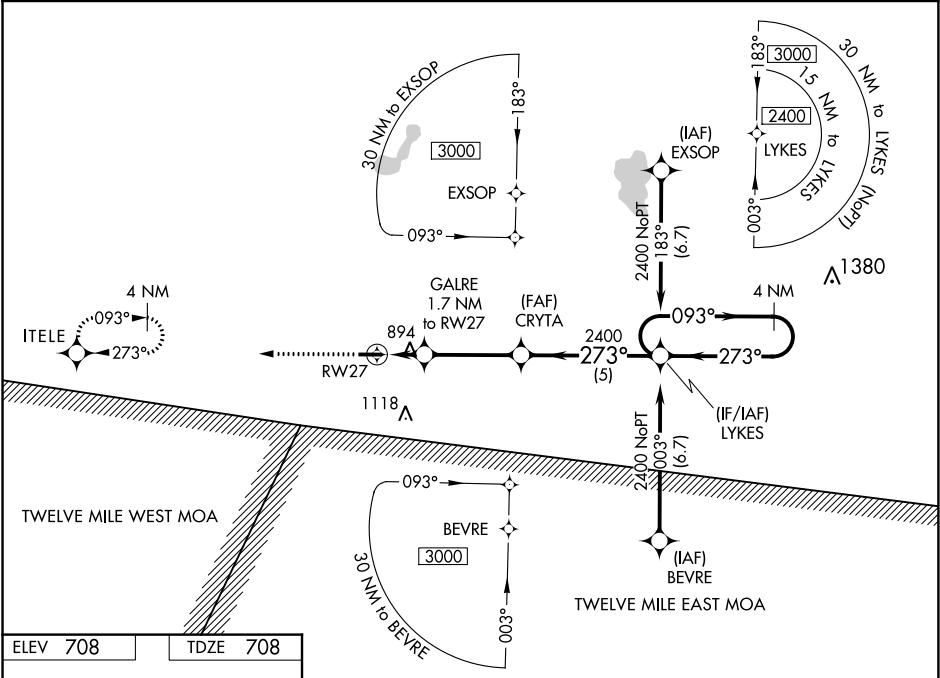
RNAV (GPS) RWY 27
ARENS FIELD (RWN)

NA

Baro-VNAV NA. Use Knox altimeter setting; when not received, use Rochester altimeter setting and increase all DA/MDA 20 feet and LNAV/VNAV all Cals visibility 1/8 mile. DME/DME RNP-0.3 NA. Helicopter visibility reduction below 3/4 SM NA.

MISSED APPROACH: Climb to 2400 direct ITELE hold.

OXI AWOS-3 135.775	SOUTH BEND APP CON ★ 132.05 257.8	UNICOM 122.8 (CTAF) 0
------------------------------	---	---------------------------------



ELEV **708** TDZE **708**

MIRL Rwy 9-27 0
REIL Rws 9 and 27 0

4201 X 75

273° to RW27

2400

↑

ITELE

✱

VGSI and RNAV glidepath not coincident
(VGSI Angle 4.25/TCH 20).

CRYTA

LYKES

4 NM
Holding Pattern

*LNAV only.

GALRE
1.7 NM
to RW27

RW27

*1280

2400

273°

093°

2400

273°

GP 3.00°
TCH 45

1.7 NM

3.5 NM

5 NM

CATEGORY	A	B	C	D
LPV DA	995-1	287 (300-1)		NA
LNAV/ VNAV DA	1224-1¾	516 (600-1¾)		NA
LNAV MDA	1200-1	492 (500-1)	1200-1⅜ 492 (500-1⅝)	NA
C CIRCLING	1240-1	532 (600-1)	1480-2¼ 772 (800-2¼)	NA

EC-2, 31 DEC 2020 to 28 JAN 2021

EC-2, 31 DEC 2020 to 28 JAN 2021