

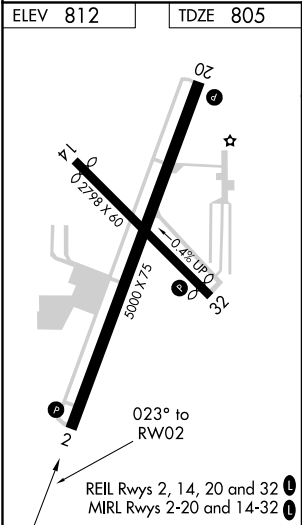
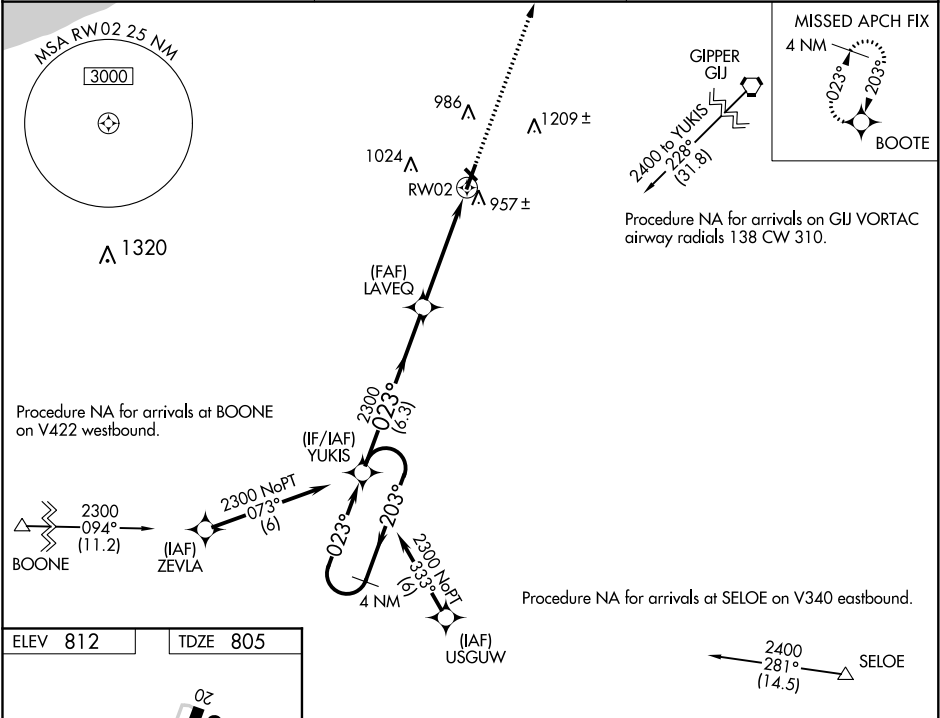
WAAS CH <b>77834</b> <b>W02A</b>	APP CRS <b>023°</b>	Rwy Idg TDZE Apt Elev	<b>5000</b> <b>805</b> <b>812</b>
--	------------------------	-----------------------------	---

RNAV (GPS) RWY 2  
LA PORTE MUNI (PPO)

**⚠** Baro-VNAV NA when using South Bend altimeter setting. For uncompensated Baro-VNAV systems, LNAV/VNAV NA below -16°C (4°F) or above 54°C (130°F). DME/DME RNP-0.3 NA. When local altimeter setting not received, use South Bend altimeter setting and increase all DA 49 feet, and all MDA 60 feet; increase LNAV/VNAV all Cats and LNAV Cat C/D visibility ¼ mile. Helicopter visibility reduction below ¾ SM NA. Circling Rwy 14, 32 NA at night.

**MISSED APPROACH:**  
Climb to 2500 direct BOOTE and hold.

AWOS-3 <b>119.825</b>	SOUTH BEND APP CON ★ <b>132.05 257.8</b>	UNICOM <b>123.0</b> (CTAF) <b>0</b>
--------------------------	---	--



4 NM Holding Pattern		VGSI and RNAV glidepath not coincident (VGSI Angle 3.00/TCH 24).		2500	BOOTE
YUKIS		LAVEQ		2300	
2300 ← 203°		023° →		RW02	
GP 3.00° TCH 40		2300			
		6.3 NM		4.6 NM	
CATEGORY	A	B	C	D	
LPV DA	1067-1		262 (300-1)		
LNAV/VNAV DA	1220-1 3/8		415 (500-1 3/8)		
LNAV MDA	1220-1	415 (500-1)	1220-1 1/8	415 (500-1 1/8)	
CIRCLING	1320-1	508 (600-1)	1560-2 1/4 748 (800-2 1/4)	1560-2 1/2 748 (800-2 1/2)	

EC-2, 31 DEC 2020 to 28 JAN 2021

EC-2, 31 DEC 2020 to 28 JAN 2021