

VOR/DME FLM  
**117.0**  
Chan **117**

APP CRS  
**059°**

Rwy Idg  
TDZE  
Apt Elev  
**N/A**  
**N/A**  
**958**

VOR/DME-A  
BROWN COUNTY (GEO)

▼

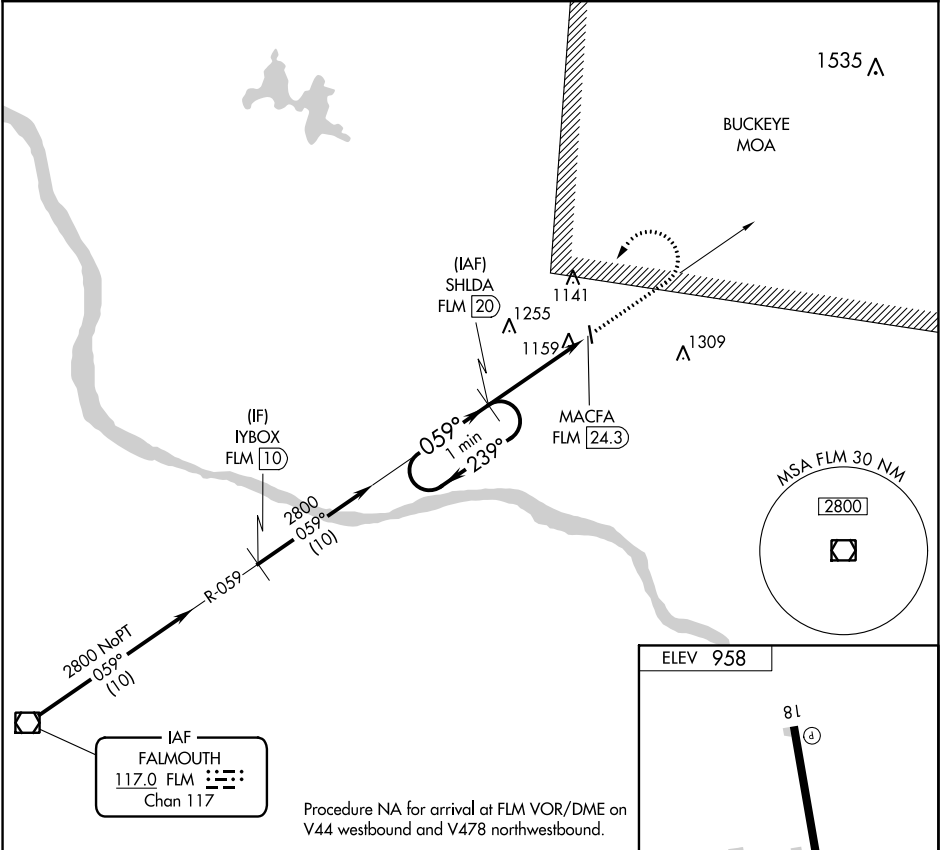
▲ NA

Use Cincinnati/Northern Kentucky Intl, KY altimeter setting. Procedure NA at night. Helicopter visibility reduction below 1 SM NA.

MISSED APPROACH: Climb to 2800 then left turn via FLM VOR/DME R-059 to SHLDA 20 DME and hold.

INDIANAPOLIS CENTER  
**135,575 290.5**

CTAF **0**  
**122.9**



One Minute Holding Pattern

SHLDA FLM 20

2800 ← 239°  
059° →

2800

MACFA FLM 24.3

4.3 NM

2800

FLM R-059

SHLDA FLM 20

CATEGORY	A	B	C	D
CIRCLING	1700-1 742 (800-1)	1700-1¼ 742 (800-1¼)	1700-2¼ 742 (800-2¼)	NA

REIL Rwy 18 and 36 **0**  
MRL Rwy 18-36 **0**

81 **0**  
3500 X 65  
1059 ± **0**  
36 **0**  
059° 4.3 NM from FAF

EC-2, 31 DEC 2020 to 28 JAN 2021

EC-2, 31 DEC 2020 to 28 JAN 2021