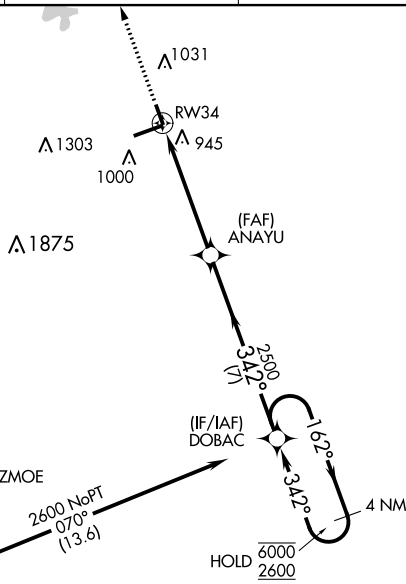


RNAV (GPS) RWY 34
INDIANAPOLIS RGNL (MQJ)

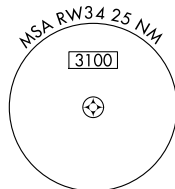
For uncompensated Baro-VNAV systems, LNAV/VNAV NA below -16°C (4°F) or above 54°C (130°F).

MISSED APPROACH: Climb to 2500 direct AYAGO and hold.

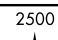

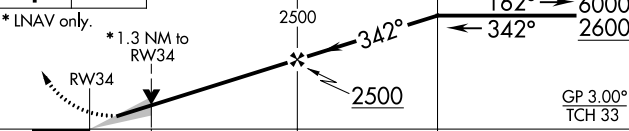
MISSED APCH FIX



Procedure NA for arrivals at OZMOE
on V128 northwest bound.



REIL Rwy 7 and 34
HIRL Rwy 7-25 **L**
MIRL Rwy 16-34

 		VGS1 and RNAV glidepath not coincident (VGS1 Angle 3.00/TCH 49).		DOBAC 4 NM Holding Pattern	
* INAV only.					
CATEGORY		A	B	C	D
LPV	DA	1058- $\frac{3}{4}$ 200 (200- $\frac{3}{4}$)			
RNAV/ VNAV	DA	1119- $\frac{7}{8}$ 261 (300- $\frac{7}{8}$)			
RNAV	MDA	1320-1	462 (500-1)	1320-1 $\frac{3}{8}$	462 (500-1 $\frac{3}{8}$)
C CIRCLING		1340-1	478 (500-1)	1360-1 $\frac{1}{2}$ 498 (500-1 $\frac{1}{2}$)	1660-2 $\frac{1}{2}$ 798 (800-2 $\frac{1}{2}$)

RNAV (GPS) RWY 34