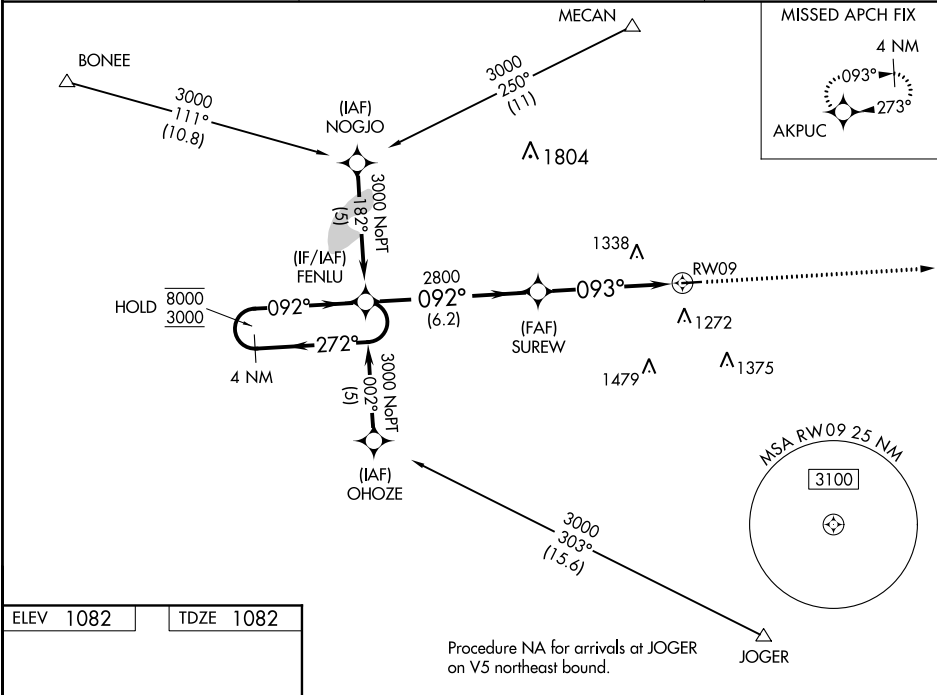


WAAS CH 53409 W09A	APP CRS 093°	Rwy Idg TDZE Apt Elev	4001 1082 1082
--	------------------------	-----------------------------	---

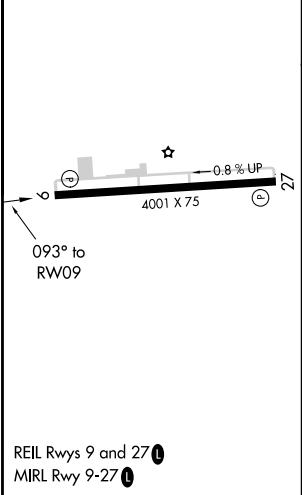
RNAV (GPS) RWY 9
MADISON COUNTY (UYF)

RNP APCH.	MISSED APPROACH: Climb to 3000 direct AKPUC and hold.
-----------	---

AWOS-3PT 120.85	COLUMBUS APP CON 118.85 269.275	UNICOM 123.0 (CTAF) 0
---------------------------	---	---------------------------------



ELEV 1082	TDZE 1082
------------------	------------------



4 NM Holding Pattern		VGSI and RNAV glidepath not coincident (VGSI Angle 3.00/TCH 29).		3000	AKPUC
		FENLU		↑	✦
8000 3000		←272° 092°→	092°	SUREW 2800	*LNAV only.
GP 3.00° TCH 40				*1.5 NM to RW09	
		2800	093°	RW09	
		6.2 NM	3.7 NM	1.5	
CATEGORY	A	B	C	D	
LPV DA	1332-1 250 (300-1)				
LNAV/VNAV DA	1548-1 ³ / ₄ 466 (500-1 ³ / ₄)				
LNAV MDA	1580-1	498 (500-1)	1580-1 ³ / ₈ 498 (500-1 ³ / ₈)	1580-1 ¹ / ₂ 498 (500-1 ¹ / ₂)	
CIRCLING	1600-1 518 (600-1)	1640-1 558 (600-1)	1640-1 ¹ / ₂ 558 (600-1 ¹ / ₂)	1640-2 558 (600-2)	

EC-2, 31 DEC 2020 to 28 JAN 2021

EC-2, 31 DEC 2020 to 28 JAN 2021