

LOM JV	APP CRS	Rwy Idg	7000
331	182°	TDZE	476
		Apt Elev	476

NDB RWY 18

CLARK RGNL (JVY)

RADAR required for procedure entry.

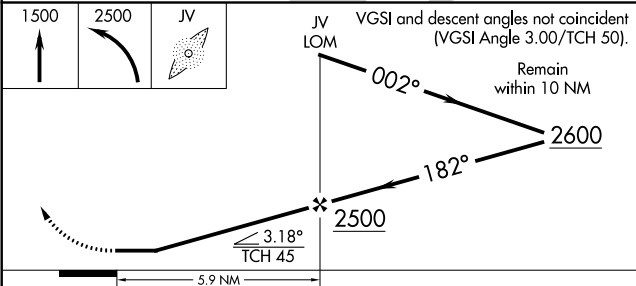
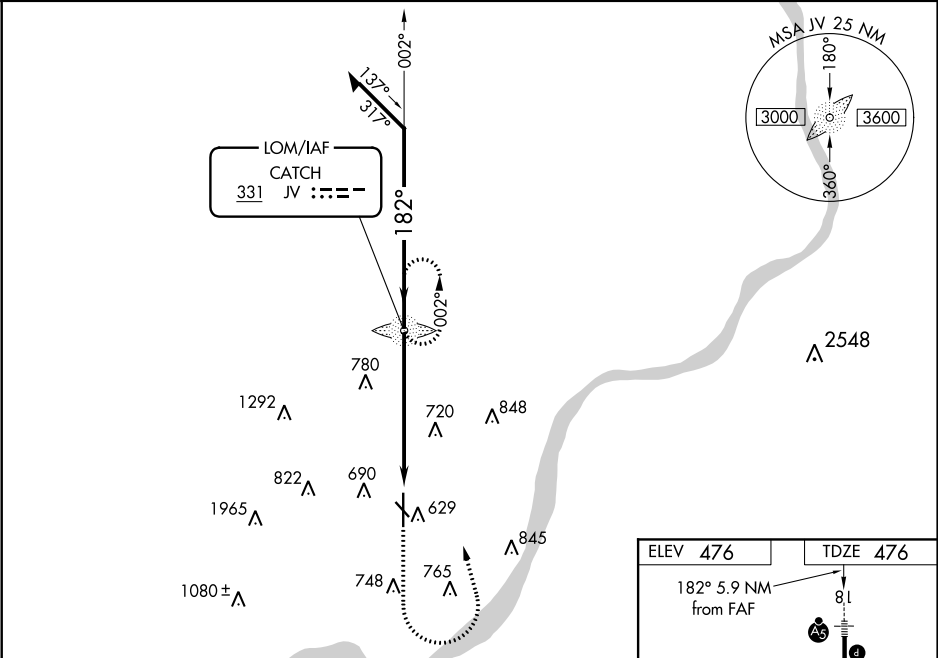
NA

Circling NA for Cat D southwest of Rwy 14 and 36. Circling Rwy 14, 32 NA at night. For inop ALS, increase S-18 Cats A and B visibility to 1 SM and Cats C and D to 1½ SM. When local altimeter setting not received, use Louisville Muhammad Ali Intl altimeter setting and increase all MDAs 40 feet and Circling visibility Cat C ½ SM. For inop ALS when using Louisville Muhammad Ali Intl altimeter setting, increase S-18 Cats A and B visibility to 1 SM.

MALSR

MISSED APPROACH: Climb to 1500 then climbing left turn to 2500 direct CATCH LOM and hold.

AWOS-3 118.575	LOUISVILLE APP CON 132.075 327.0	CLNC DEL 118.05	UNICOM 122.7 (CTAF) 0
-------------------	-------------------------------------	--------------------	--------------------------



ELEV 476	TDZE 476
182° 5.9 NM from FAF	81
3892 X 1/2	7000 X 100
REIL Rwy 14 and 32	36
REIL Rwy 18 and 36	36
MIRL Rwy 14-32 and 18-36	
FAF to MAP 5.9 NM	
Knots	60 90 120 150 180
Min:Sec	5:54 3:56 2:57 2:22 1:58