

WAAS CH <b>82426</b> <b>W18A</b>	APP CRS <b>182°</b>	Rwy Idg TDZE Apt Elev	<b>7000</b> <b>476</b> <b>476</b>
--	------------------------	-----------------------------	---

RNAV (GPS) RWY 18

CLARK RGNL (JVY)

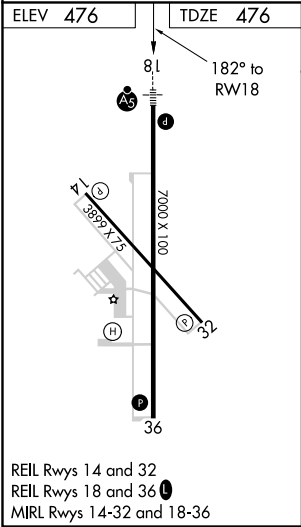
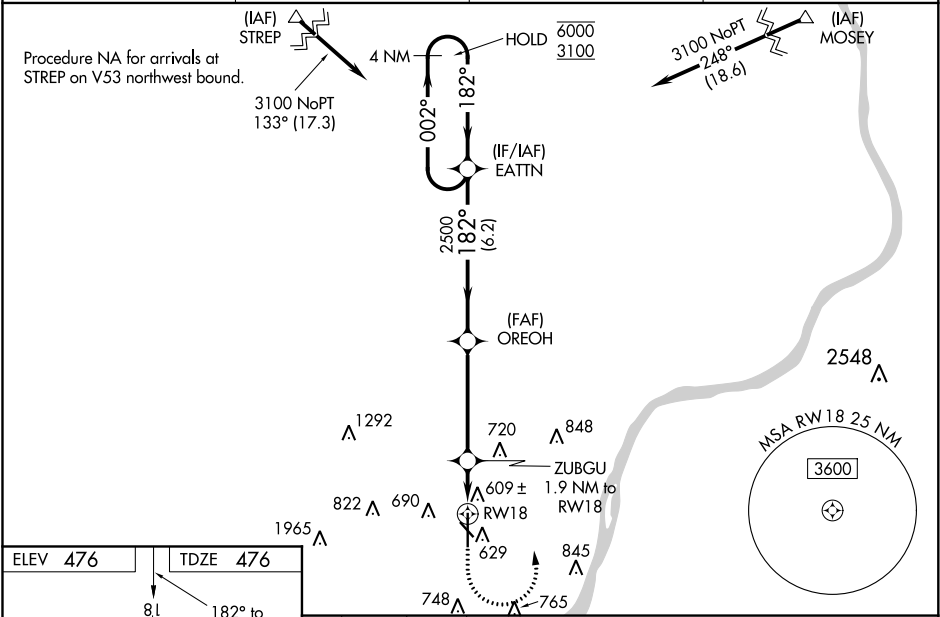
RNP APCH.

Circling NA for Cat D southwest of Rwy 14 and 36. Circling Rwy 14, 32 NA at night. Baro-VNAV and VDP NA when using Louisville Muhammad Ali Intl altimeter setting. For uncompensated Baro-VNAV systems, LNAV/VNAV NA below -15°C or above 54°C. For inop ALS, increase LNAV/VNAV visibility to 1 SM. When local altimeter setting not received, use Louisville Muhammad Ali Intl altimeter setting: increase all DA 30 feet and LNAV/VNAV visibility ½ SM; increase all MDAs 40 feet, LNAV visibility Cats C and D ½ SM and Circling visibility Cat C ¼ SM. For inop ALS when using Louisville Muhammad Ali Intl altimeter setting, increase LNAV/VNAV visibility to 1½ SM.

MALSR

MISSED APPROACH:  
Climb to 900 then climbing left turn to 3100 direct EATTN and hold.

AWOS-3 <b>118.575</b>	LOUISVILLE APP CON <b>132.075 327.0</b>	CLNC DEL <b>118.05</b>	UNICOM <b>122.7 (CTAF) 0</b>
--------------------------	--	---------------------------	---------------------------------



900 3100 EATTN		OREOH		EATTN	
*LNAV only		ZUBGU 1.9 NM to RW18		4 NM Holding Pattern	
RW18		*1.1 NM to RW18		002° 6000	
-1.1 NM		0.8 NM		182° 3100	
4.3 NM		6.2 NM		GP 3.00°	
CATEGORY		A		B	
LPV DA		676-½		200 (200-½)	
LNAV/VNAV DA		850-⅝		374 (400-⅝)	
LNAV MDA		860-½		860-⅝ 384 (400-⅝)	
CIRCLING		1000-1 524 (600-1)		1040-1 564 (600-1)	
		1060-1½ 584 (600-1½)		1100-2 624 (700-2)	