

LOC/DME I-DDV	APP CRS	Rwy Idg	12102
110.1	052°	TDZE	736
Chan 38		Apt Elev	744

ILS or LOC RWY 5R  
RICKENBACKER INTL (LCK)

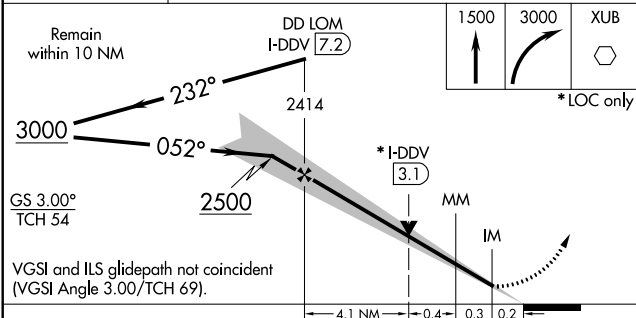
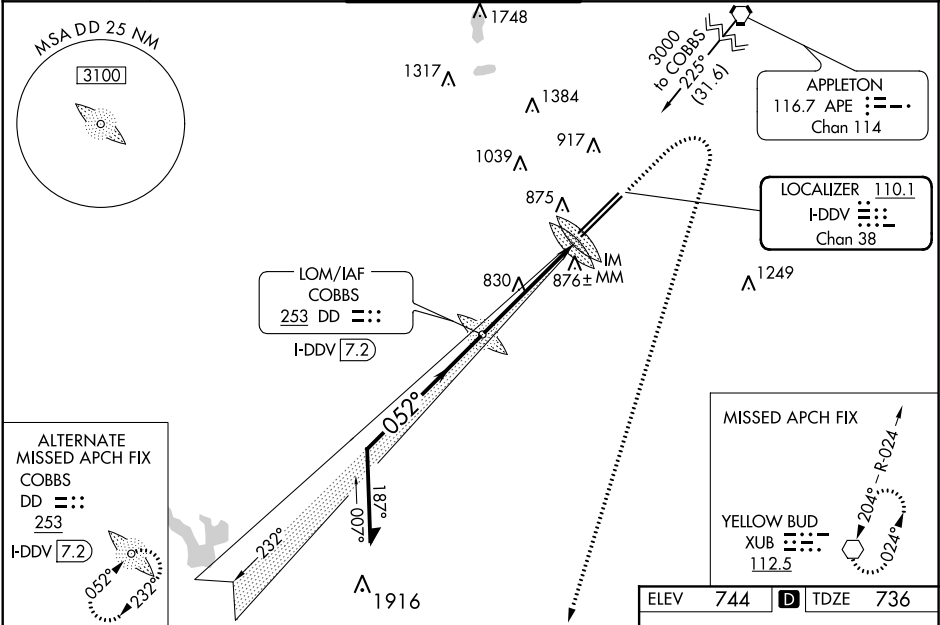
ADF or DME required.

Circling NA northwest of Rwy 5L-23R.

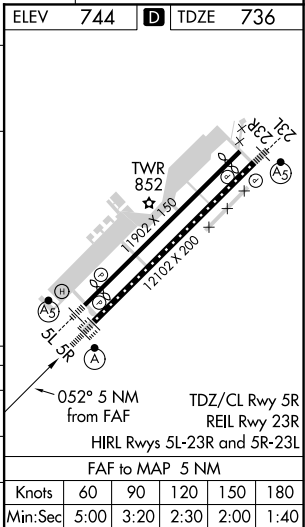
ALSF-2

MISSED APPROACH: Climb to 1500 then climbing right turn to 3000 direct XUB VOR and hold.

ATIS 132.75	COLUMBUS APP CON 134.0 279.6	RICK TOWER 120.05 348.4	GND CON 125.275 275.8	CLNC DEL 125.275 275.8
----------------	---------------------------------	----------------------------	--------------------------	---------------------------



CATEGORY	A	B	C	D
S-ILS 5R	936/18		200 (200-½)	
S-LOC 5R	1080/24	344 (400-½)		1080/30 344 (400-¾)
CIRCLING	1180-1 436 (500-1)	1200-1 456 (500-1)	1200-1½ 456 (500-1½)	1300-2 556 (600-2)



EC-2, 31 DEC 2020 to 28 JAN 2021

EC-2, 31 DEC 2020 to 28 JAN 2021