


| | | |
|--|------------------------|--|
| WAAS CH 62811 W23A | APP CRS 230° | Rwy Idg 12102 TDZE 739 Apt Elev 744 |
|--|------------------------|--|

RNAV (GPS) RWY 23L
RICKENBACKER INTL (LCK)

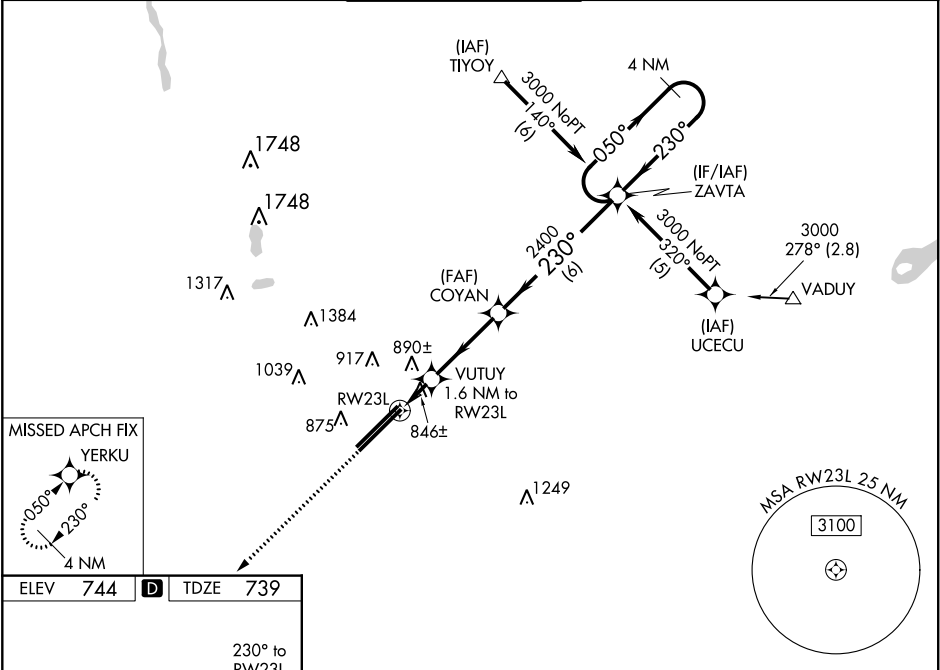
A Circling NA NW of Rwy 5L-23R. Baro-VNAV NA when using John Glenn Columbus Intl altimeter setting. For uncompensated Baro-VNAV systems, LNAV/VNAV NA below -16°C (4°F) or above 47°C (116°F). DME/DME RNP-0.3 NA. When local altimeter setting not received, use John Glenn Columbus Intl altimeter setting and increase all DA 36 feet and LNAV/VNAV all Cats visibility to RVR 5000, increase all MDA 40 feet. ** RVR 1800 authorized with use of FD or AP or HUD to DA, NA when using John Glenn Columbus Intl altimeter setting.

MALSR

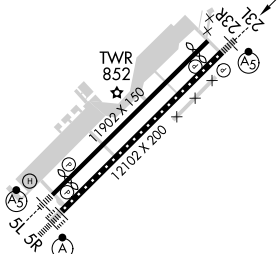


MISSED APPROACH:
Climb to 3000 direct
YERKU and hold.

| | | | | |
|-----------------------|--|-----------------------------------|---------------------------------|----------------------------------|
| ATIS 132.75 | COLUMBUS APP CON 134.0 279.6 | RICK TOWER 120.05 348.4 | GND CON 125.275 275.8 | CLNC DEL 125.275 275.8 |
|-----------------------|--|-----------------------------------|---------------------------------|----------------------------------|



ELEV **744** **D** TDZE **739**



TDZ/CL Rwy 5R
REIL Rwy 23R
HIRL Rwy 5L-23R and 5R-23L

3000 YERKU VGSI and RNAV glidepath not coincident (VGSI Angle 3.00/TCH 78).

4 NM Holding Pattern

ZAVTA 050° 3000

GP 3.00° TCH 55

* LNAV only.

VUTUY 1.6 NM to RW23L

COYAN

RW23L

*1280

2400

1.6 3.4 NM 6 NM

| CATEGORY | A | B | C | D |
|--------------|-----------------------|-----------------------|-------------------------|------------------------|
| LPV DA ** | 939/24 | | 200 (200-½) | |
| LNAV/VNAV DA | 1121/40 | | 382 (400-¾) | |
| LNAV MDA | 1180/24 | 441 (500-½) | 1180/40 441 (500-¾) | 1180/50 441 (500-1) |
| CIRCLING | 1180-1 436 (500-1) | 1200-1 456 (500-1) | 1200-1½ 456 (500-1½) | 1300-2 556 (600-2) |

EC-2, 31 DEC 2020 to 28 JAN 2021

EC-2, 31 DEC 2020 to 28 JAN 2021