

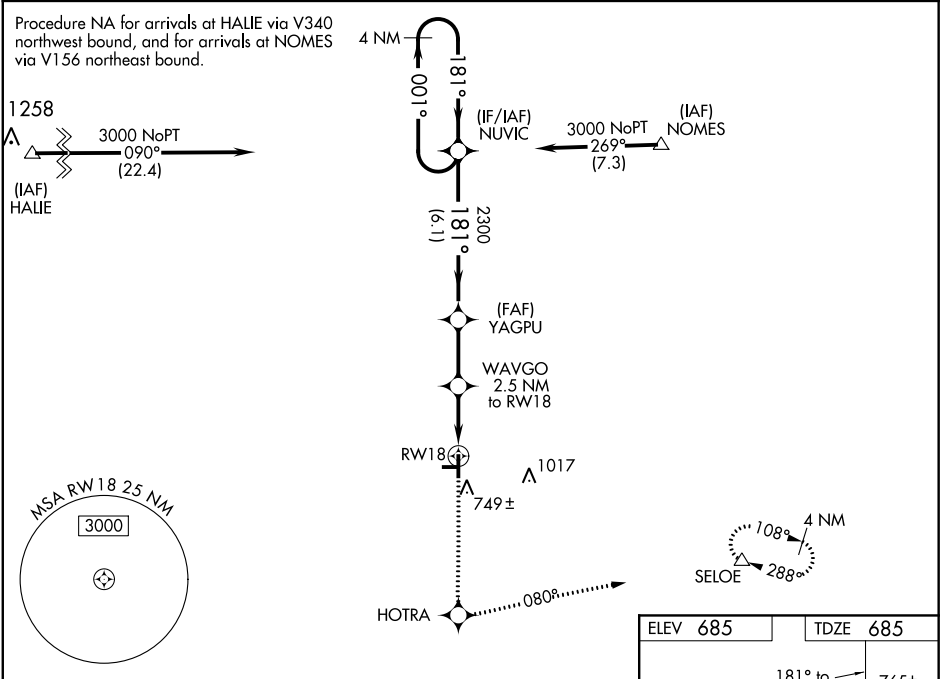
WAAS CH 87108 W18A	APP CRS 181°	Rwy Idg TDZE Apt Elev	5001 685 685
--	------------------------	-----------------------------	---

RNAV (GPS) RWY 18
STARKE COUNTY (OXI)

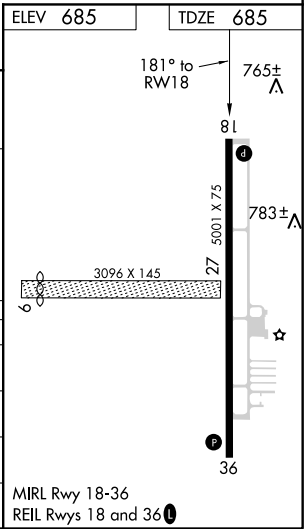
⚠ DME/DME RNP-0.3 NA. Visibility reduction by helicopters NA. For uncompensated Baro-VNAV systems, LNAV/VNAV NA below -16°C (4°F) or above 47°C (116°F). Baro-VNAV and VDP NA when using South Bend altimeter setting. Obtain local altimeter setting on CTAF, when not received use South Bend altimeter setting and increase all MDA/DA 80 feet, increase LPV and LNAV/VNAV visibilities ¼ mile all Cats, increase LNAV Cat C, D visibilities ½ mile.

MISSED APPROACH:
Climb to 3000 direct HOTRA and left turn via 080° track to SELOE and hold.

AWOS-3 135.775	SOUTH BEND APP CON* 132.05 257.8	UNICOM 122.8 (CTAF) 0
--------------------------	--	---------------------------------



VGSI and RNAV glidepath not coincident (VGSI Angle 3.00/TCH 27).				
4 NM Holding Pattern		NUVIC	HOTRA	SELOE
3000 ← 001° 181° →		YAGPU	WAVGO 2.5 NM to RW18	*LNAV only.
GP 3.00° TCH 40		2300	*1.520	
6.1 NM		2.4 NM	1.5 NM	1 NM
CATEGORY	A	B	C	D
LPV DA	935-1		250 (300-1)	
LNAV/ VNAV DA	1035-1¼		350 (400-1¼)	
LNAV MDA	1040-1		355 (400-1)	
CIRCLING	1100-1 415 (500-1)	1140-1 455 (500-1)	1140-1½ 455 (500-1½)	1240-2 555 (500-2)



EC-2, 31 DEC 2020 to 28 JAN 2021

EC-2, 31 DEC 2020 to 28 JAN 2021