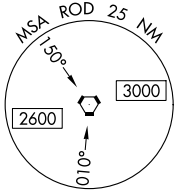
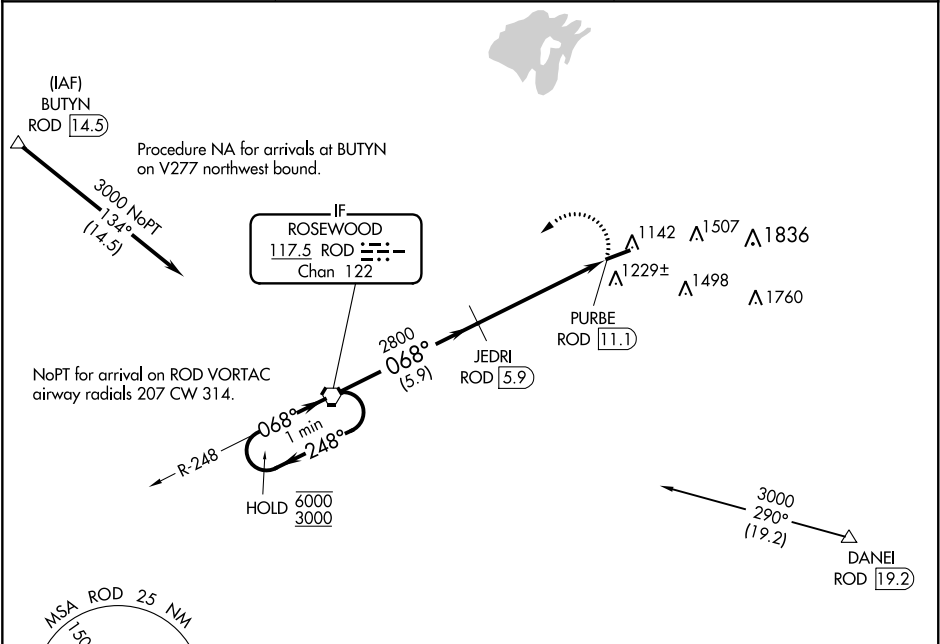


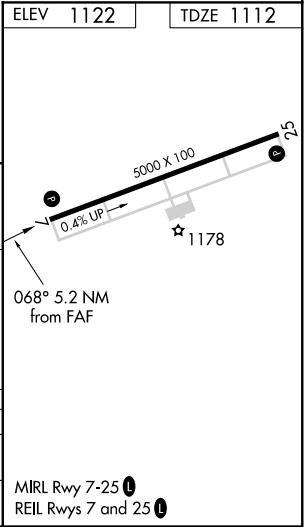
VORTAC ROD	APP CRS	Rwy Idg	5000
117.5	068°	TDZE	1112
Chan 122		Apt Elev	1122

VOR RWY 7
BELLEFONTAINE RGNL (EDJ)

DME required.		MISSED APPROACH: Climbing left turn to 3000 direct ROD VORTAC and hold.
AWOS-3 118.075	COLUMBUS APP CON 118.425 294.5	UNICOM 122.8 (CTAF) 0



One Minute Holding Pattern		ROD VORTAC	3000	ROD
6000 ← 248°		068° →	2800	JEDRI ROD [5.9]
3000				ROD [10]
				PURBE ROD [11.1]
				TCH 41
				3.00°
				5.9 NM
				4.1 NM
				1.1 NM
CATEGORY	A	B	C	D
S-7	1480-1	368 (400-1)	1480-1¼	368 (400-1¼)
CIRCLING	1540-1	1640-1	1640-1½	1720-2
	418 (500-1)	518 (600-1)	518 (600-1½)	598 (600-2)



EC-2, 31 DEC 2020 to 28 JAN 2021

EC-2, 31 DEC 2020 to 28 JAN 2021