

| | | | |
|-----------|---------|----------|-------|
| LOC I-JDU | APP CRS | Rwy ldg | 10000 |
| 111.15 | 319° | TDZE | 442 |
| | | Apt Elev | 459 |

ILS or LOC RWY 32R

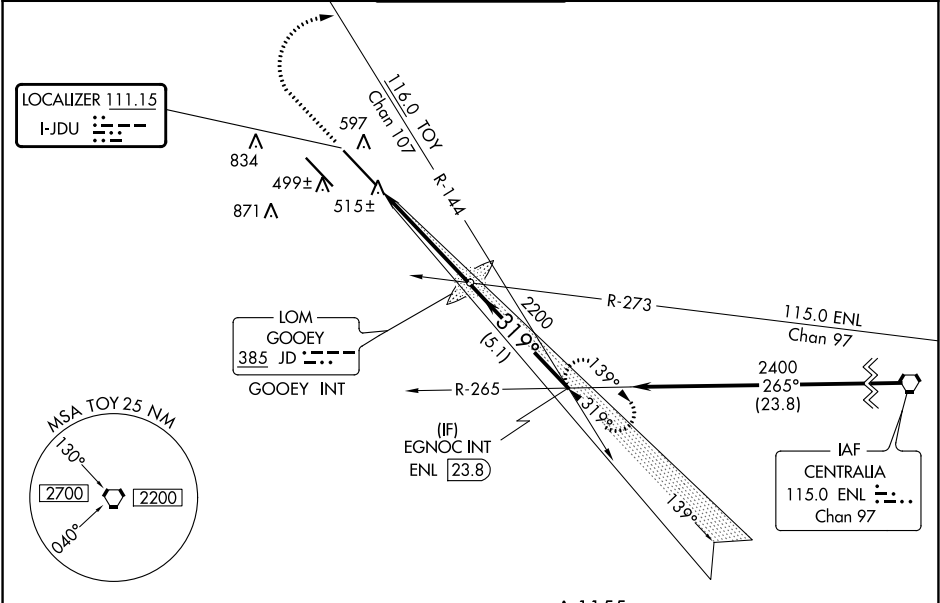
SCOTT AFB/MIDAMERICA (BLV)

⚠ When local alimeter setting not received, use St Louis Downtown alimeter setting; increase DA to 684 feet and all MDA 60 feet; increase S-LOC 32R Cat C/D/E visibility to RVR 3500 and increase Circling Cat C/D/E visibility ¼ mile. For inop MALS, increase S-ILS 32R Cat E visibility to RVR 4000 and increase S-LOC 32R Cat E visibility to RVR 5000. For inop MALS when using St Louis Downtown alimeter setting, increase S-ILS 32R Cat E visibility to RVR 4000 and increase S-LOC 32R Cat E visibility to RVR 6000. ** RVR 1800 authorized with use of FD or AP or HUD to DA (NA when using St Louis Downtown alimeter setting).

MALS

MISSED APPROACH:
Climb to 1500 then
climbing right turn to
2400 on heading 194°
and TOY VORTAC
R-144 to EGNOC INT
and hold.

| | | | | |
|-------------|------------------|--------------|-------------|-----------------------|
| ATIS ★ | ST LOUIS APP CON | SCOTT TOWER | GND CON | CLNC DEL |
| 128.7 256.7 | 125.2 281.5 | 128.25 253.5 | 119.2 275.8 | 119.875 225.4 263.025 |



ELEV 459

TDZE 442

REIL Rwy 14L
HIRL Rwys 14R-32L and 14L-32R

FAF to MAP 4.9 NM

| | | | | | |
|---------|------|------|------|------|------|
| Knots | 60 | 90 | 120 | 150 | 180 |
| Min:Sec | 4:54 | 3:16 | 2:27 | 1:58 | 1:38 |

| | | | | | | | | |
|--------------|-----------------------|-----------------------|-------------------------|---|-------------------------|--|--|-----------------|
| 1500 | 2400 | TOY R-144 | EGNOC INT | VGSI and ILS glidepath not coincident (VGSI Angle 3.00/TCH 71). | | | | |
| ↑ | hdg 194° | | | GOOEY LOM/INT | EGNOC INT | | | |
| | | | | 2064 | 2400 | | | |
| | | | | 2200 | | | | GS 3.00° TCH 55 |
| | | | | 4.9 NM | 5.1 NM | | | |
| CATEGORY | A | B | C | D | E | | | |
| S-ILS 32R ** | 642/24 200 (200-½) | | | | | | | |
| S-LOC 32R | 780/24 | 338 (400-½) | 780/26 | 338 (400-½) | | | | |
| ☑ CIRCLING | 1000-1 541 (600-1) | 1080-1 621 (700-1) | 1240-2¼ 781 (800-2¼) | 1240-2½ 781 (800-2½) | 1240-2¾ 781 (800-2¾) | | | |