

WAAS CH <b>58218</b> <b>W14A</b>	APP CRS <b>139°</b>	Rwy Idg <b>10000</b> TDZE <b>442</b> Apt Elev <b>459</b>
--	------------------------	--

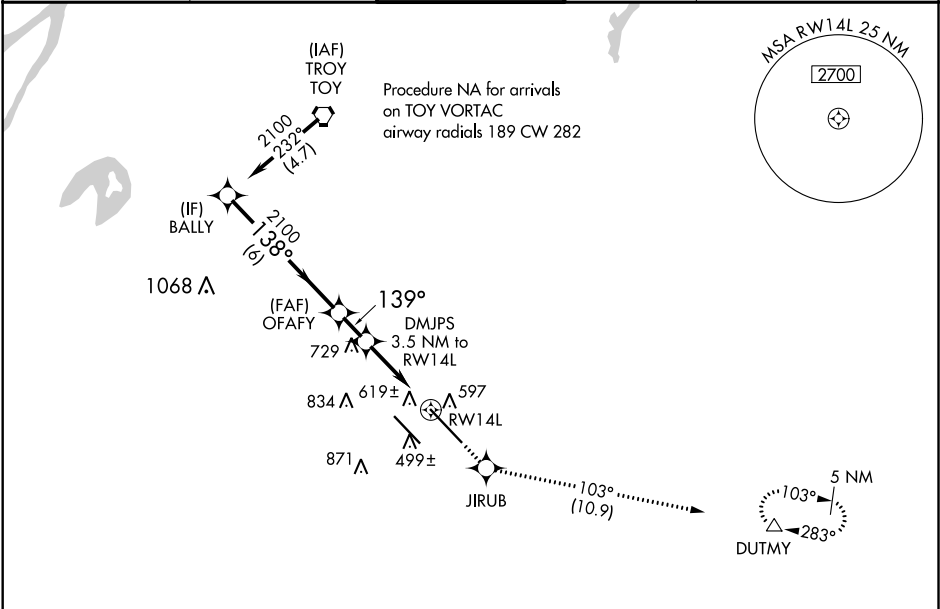
**RNAV (GPS) RWY 14L**  
SCOTT AFB/MIDAMERICA (BLV)

**⚠ ASR**

For uncompensated Baro-VNAV systems, LNAV/VNAV NA below -18°C (0°F) or above 54°C (130°F). DME/DME RNP-0.3 NA. Baro-VNAV and VDP NA when using St Louis Downtown altimeter setting. When local altimeter setting not received, use St Louis Downtown altimeter setting; increase LPV DA to 684 feet and LNAV/VNAV DA to 976 feet and all MDA 60 feet; increase LNAV/VNAV all Cats visibility 1/8 mile and increase Circling Cat C/D visibility 1/4 mile.

**MISSED APPROACH:**  
Climb to 2300 direct JIRUB and on track 103° to DUTMY and hold.

ATIS ★ <b>128.7 256.7</b>	ST LOUIS APP CON <b>125.2 281.5</b>	SCOTT TOWER <b>128.25 253.5</b>	GND CON <b>119.2 275.8</b>	CLNC DEL <b>119.875 225.4 263,025</b>
------------------------------	--	------------------------------------	-------------------------------	--



VGSI and RNAV glidepath not coincident (VGSI Angle 3.00/TCH 71).				2300 ↑	JIRUB ✳	DUTMY tr 103° △	ELEV 459	TDZE 442
				*RNAV only.				
BALLY 2100 GP 3.00° TCH 55				OFAFY 2100 138°	DMJPS 3.5 NM to RW14L	*1620 139° to RW14L *1.2 NM to RW14L		
6 NM				1.5 NM	2.3 NM	1.2		
CATEGORY	A	B	C	D				
LPV DA	642/40 200 (200-¾)							
LNAV/ VNAV DA	934-1½ 492 (500-1½)							
LNAV MDA	900/55	458 (500-1)	900-1⅞	458 (500-1⅞)				
CIRCLING	1000-1 541 (600-1)	1080-1 621 (700-1)	1240-2¼ 781 (800-2¼)	1240-2½ 781 (800-2½)				
					REIL Rwy 14L HIRL Rws 14R-32L and 14L-32R			