

WAAS CH 50518 W32A	APP CRS 319°	Rwy Idg 10000 TDZE 442 Apt Elev 459
--	------------------------	--

RNAV (GPS) RWY 32R

SCOTT AFB/MIDAMERICA (BLV)

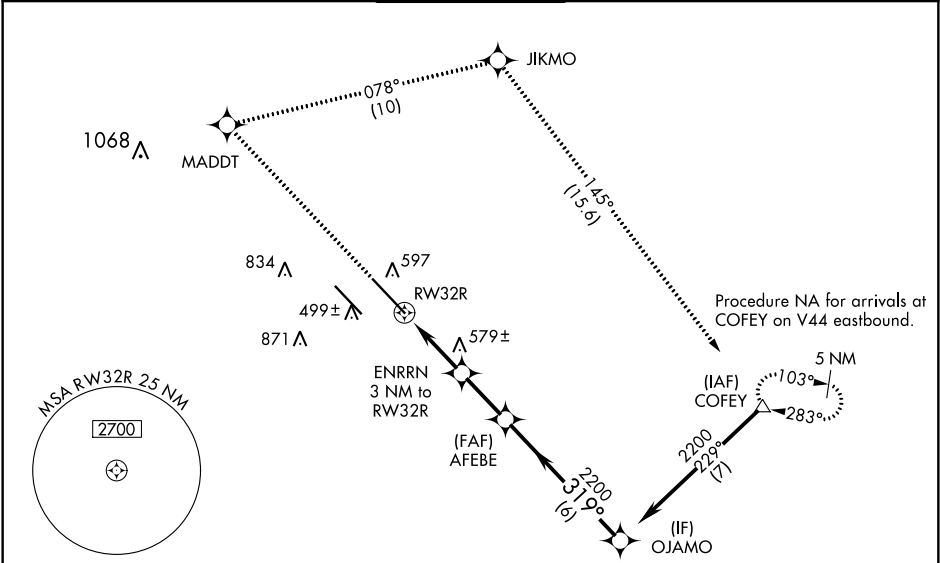
⚠

For uncompensated Baro-VNAV systems, LNAV/VNAV NA below -18°C (0°F) or above 54°C (130°F). DME/DME RNP-0.3 NA. Baro-VNAV and VDP NA when using St Louis Downtown altimeter setting. When local altimeter setting not received, use St Louis Downtown altimeter setting: increase LPV DA to 684 feet and LNAV/VNAV DA to 846 feet and all MDA 60 feet; increase LNAV/VNAV all Cats visibility and LNAV Cat C/D visibility to RVR 4500; increase Circling Cat C/D visibility ¼ mile. For inoperative MALSR, increase LNAV/VNAV all Cats visibility to RVR 6000.

MALSR

MISSED APPROACH: Climb to 2300 direct MADDT and right turn on track 078° to JIKMO and on track 145° to COFEY and hold.

ATIS ★ 128.7 256.7	ST LOUIS APP CON 125.2 281.5	SCOTT TOWER 128.25 253.5	GND CON 119.2 275.8	CLNC DEL 119.875 225.4 263.025
------------------------------	--	------------------------------------	-------------------------------	--



ELEV 459	TDZE 442	2300	MADDT	JIKMO	COFEY
			tr 078°		tr 145°
		VGSi and RNAV glidepath not coincident (VGSi Angle 3.00/TCH 71). *LNAV only			
		RWY 32R			
		ENRRN 3 NM to RWY 32R			
		AFEBE 2200			
		OJAMO 2200			
		GP 3.00° TCH 55			
		1 NM 2 NM 2.3 NM 6 NM			
		CATEGORY A B C D			
		LPV DA 642/24 200 (200-½)			
		LNAV/VNAV DA 804/40 362 (400-¾)			
		LNAV MDA 840/24 398 (400-½) 840/35 398 (400-¾)			
		CIRCLING 1000-1 541 (600-1) 1080-1 621 (700-1) 1240-2¼ 781 (800-2¼) 1240-2½ 781 (800-2½)			