

APP CRS	Rwy Idg	5928
047°	TDZE	619
	Apt Elev	620

RNAV (RNP) Y RWY 4R

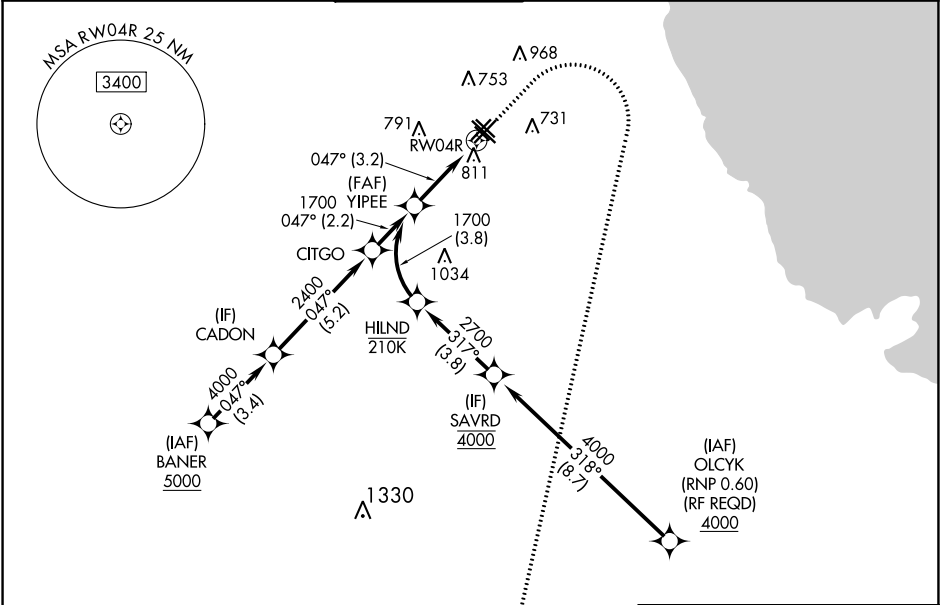
CHICAGO MIDWAY INTL (MDW)

▼

For uncompensated Baro-VNAV systems, procedure NA below -19°C (-2°F) or above 54°C (130°F). GPS required. When Rwy 4R VGSI inoperative, procedure NA at night.

MISSED APPROACH: Climb to 1100 then climbing right turn to 2600 direct EON VORTAC and hold.

D-ATIS 132.75	CHICAGO APP CON 128.2 353.875	MIDWAY TOWER 135.2 269.125	GND CON 121.65	CLNC DEL 124.625	CPDLC
------------------	----------------------------------	-------------------------------	-------------------	---------------------	-------



MISSED APCH FIX

4 NM

100

PEOTONE EON

ELEV 620

D

TDZE 619

HIRL Rwy 13C-31C and 4R-22L

MIRL Rwy 4L-22R, 13L-31R, and 13R-31L

REIL Rwy 4R, 22L, and 31C

RLS Rwy 13C and 31C

VGSI and RNAV glidepath not coincident (VGSI Angle 3.00/TCH 66).

1100

2600

EON

YIPEE

1700

1700

047°

RW04R

GP 3.00°

TCH 50

See planview for multiple IF locations.

3.2 NM

CATEGORY	A	B	C	D
RNP 0.18 DA	976/59	357 (400-1¼)		
RNP 0.30 DA	1088-1½	469 (500-1½)		

AUTHORIZATION REQUIRED

