

WAAS CH <b>56509</b> <b>W13A</b>	APP CRS <b>135°</b>	Rwy Idg <b>5310</b> TDZE <b>656</b> Apt Elev <b>656</b>
--	------------------------	---

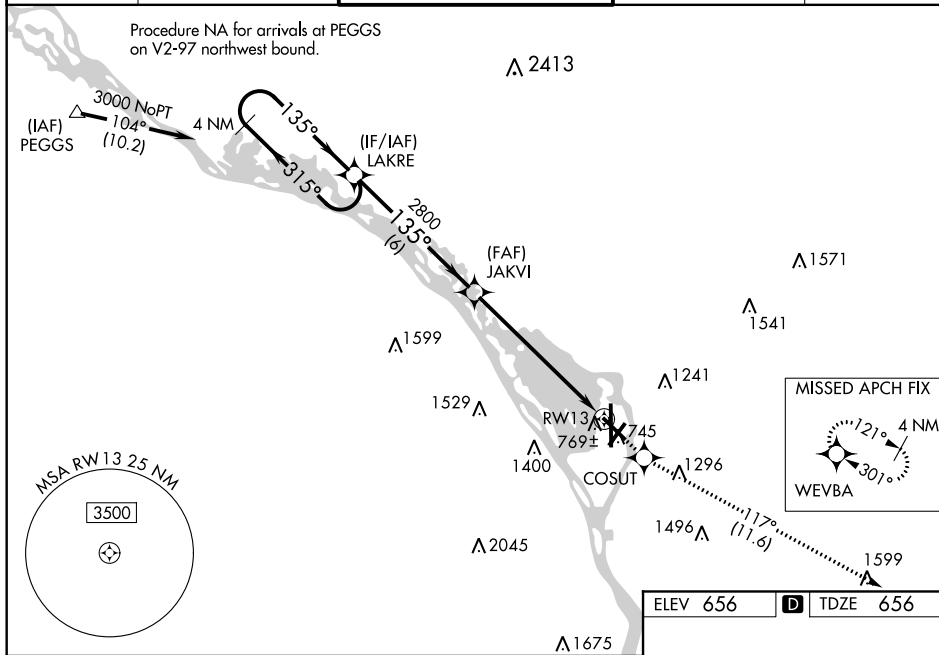
RNAV (GPS) RWY 13  
LA CROSSE RGNL (LSE)

**Baro-VNAV NA** when using Winona alimeter setting. For uncompensated Baro-VNAV systems, LNAV/VNAV NA below -27° C (-16° F) or above 54° C (130° F). DME/DME RNP-0.3 NA. Helicopter visibility reduction below  $\frac{3}{4}$  SM NA. Circling to Rwy 22 NA at night.

**-20°C** When local alimeter setting not received, use Winona alimeter setting and increase DA 53 feet, increase LPV and LNAV/VNAV visibility  $\frac{1}{4}$  mile all cats, increase all MDA 60 feet, increase LNAV Cats C/D and Circling Cat B visibility  $\frac{1}{4}$  mile.

**MISSED APPROACH:**  
Climb to 3000 direct  
COSUT and on track  
117° to WEVBA  
and hold.

ATIS <b>124.95</b>	MINNEAPOLIS CENTER <b>128.6 363.0</b>	LA CROSSE TOWER ★ <b>118.45 (CTAF) 0 251.075</b>	GND CON <b>121.8</b>	UNICOM <b>122.95</b>
-----------------------	--	---	-------------------------	-------------------------



4 NM Holding Pattern

3000 ← 315° → 135° →

GP 3.00° TCH 45

LAKRE

JAKVI 2800

6 NM

6.5 NM

RW13

3000 COSUT tr 117° WEVBA

VGS and RNAV glidepath not coincident (VGS Angle 3.00/TCH 33).

CATEGORY	A	B	C	D
LPV DA	958-1 302 (400-1)			
RNAV/VNAV DA	1020-1¼ 364 (400-1¼)			
RNAV MDA	1140-1 484 (500-1)		1140-1⅜ 484 (500-1⅜)	1140-1½ 484 (500-1½)
CIRCLING	1140-1 484 (500-1)	1460-1 804 (900-1)	1760-3 1104 (1200-3)	1820-3 1164 (1200-3)

