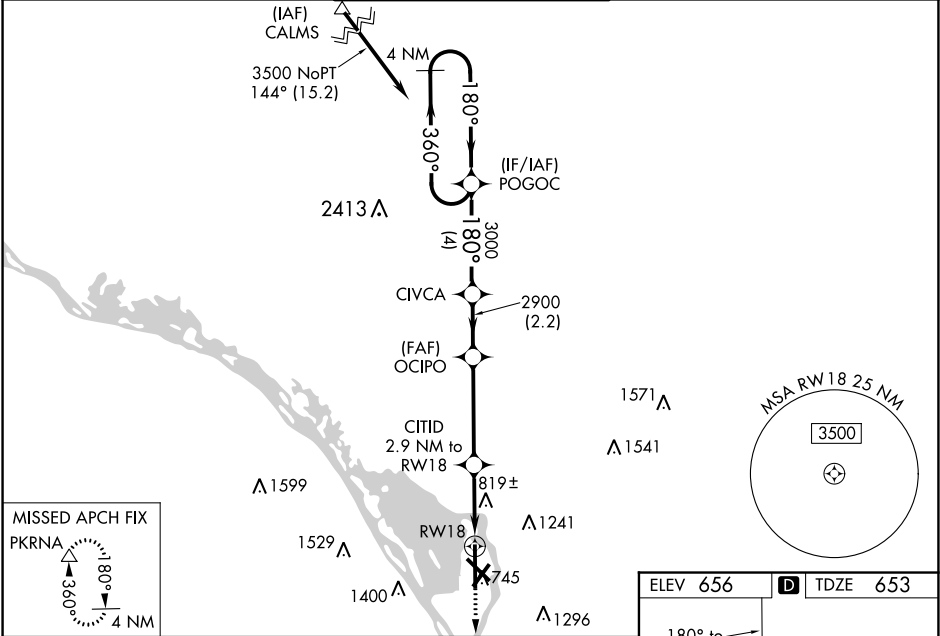


WAAS CH <b>72809</b> <b>W18A</b>	APP CRS <b>180°</b>	Rwy Idg TDZE <b>653</b> Apt Elev <b>656</b>
--	------------------------	---

RNAV (GPS) RWY 18

LA CROSSE RGNL (LSE')

RNP APCH.			MALSR	MISSED APPROACH: Climb to 3000 direct PKRNA and hold.
<div><div><div>▼</div><div>▲</div><div>❄</div></div><div>-20°C</div></div> <div>For uncompensated Baro-VNAV systems, LNAV/VNAV NA below -27° C or above 54° C. When local altimeter setting not received, use Winona altimeter setting: increase LPV DA to 987 feet, LNAV/VNAV DA to 1257 feet and all MDA 60 feet. Increase LNAV/VNAV all Cats visibility ¼ SM and Circling Cat C visibility ¼ SM. For inoperative MALSR, increase LPV all Cats visibility ½ SM. LNAV minimums NA with Winona altimeter setting. Baro-VNAV and VDP NA when using Winona altimeter setting. Circling to Rwy 22 NA at night.</div>	<div><div><div><div></div><div></div><div></div></div><div>AS</div></div></div>			
ATIS 124.95	MINNEAPOLIS CENTER 128.6 363.0	LA CROSSE TOWER★ 118.45 (CTAF) 251.075	GND CON 121.8	UNICOM 122.95



4 NM Holding Pattern		POGOC		CIVCA		OCIPO		CITID		RW18	
3500		←360° 180°→		180°		3000		2900		*1620	
GP 3.00° TCH 55								*1.8 NM to RW18		RW18	
		4 NM		2.2 NM		3.9 NM		1.1		1.8	
CATEGORY	A	B	C	D							
LPV DA	925-½ 272 (300-½)										
LNAV/ VNAV DA	1204-1½ 551 (600-1½)										
LNAV MDA	1360-½	707 (800-½)	1360-1½	707 (800-1½)	1360-1¾	707 (800-¾)					
CIRCLING	1360-1 704 (800-1)	1460-1 804 (900-1)	1760-3 1104 (1200-3)	1820-3 1164 (1200-3)							

