

WAAS CH 86509 W36A	APP CRS 360°	Rwy Idg TDZE 653 Apt Elev 656
--	------------------------	---

RNAV (GPS) RWY 36

LA CROSSE RGNL (LSE')

RNP APCH.

▼

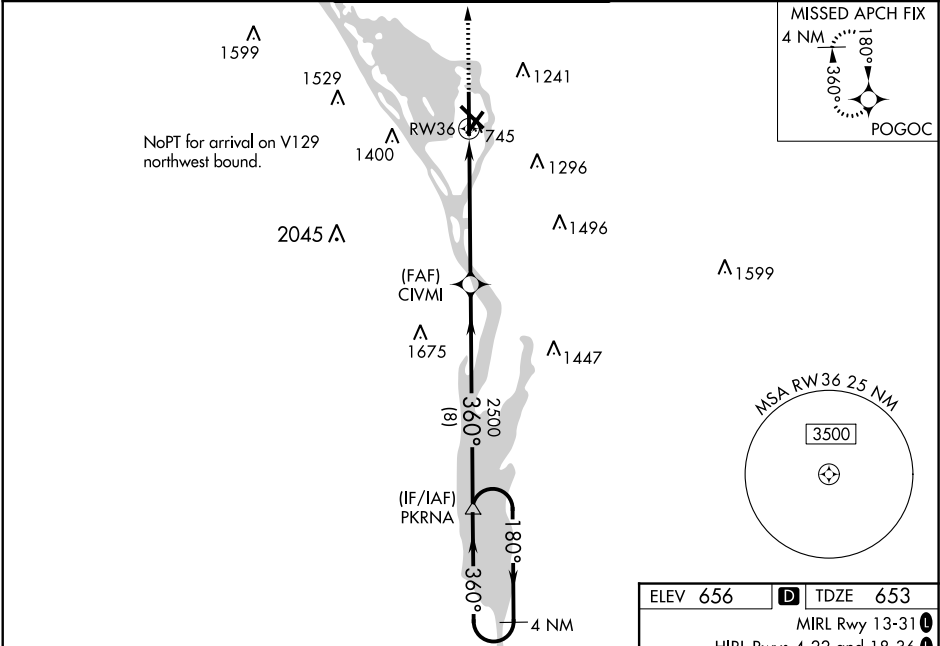
⚠

❄ -20°C

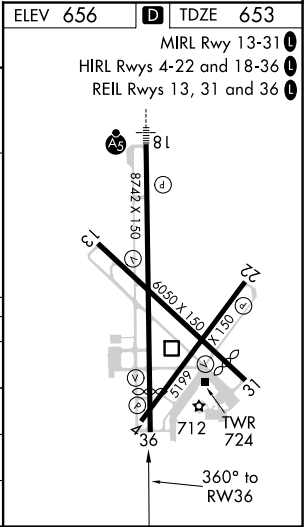
For uncompensated Baro-VNAV systems, LNAV/VNAV NA below -27° C or above 54° C. When local altimeter setting not received, use Winona altimeter setting: increase LPV DA to 1006 feet, LNAV/VNAV DA to 1256 feet and all MDA 60 feet. Increase LPV all Cats visibility ¼ SM, LNAV/VNAV all Cats visibility ¼ SM, LNAV Cats C/D visibility ¼ SM and Circling Cat C visibility ¼ SM. Circling to Rwy 22 NA at night. Baro-VNAV and VDP NA when using Winona altimeter setting.

MISSED APPROACH:
Climb to 3500 direct
POGOC and hold.

ATIS 124.95	MINNEAPOLIS CENTER 128.6 363.0	LA CROSSE TOWER★ 118.45 (CTAF) 251.075	GND CON 121.8	UNICOM 122.95
-----------------------	--	---	-------------------------	-------------------------



4 NM Holding Pattern		VGSI and RNAV glidepath not coincident (VGSI Angle 3.00/TCH 28).		3500 POGOC
3000 ←180° 360°→		360°		*LNAV only.
GP 3.00° TCH 50		2500		*1.5 NM to RW36
8 NM		4.1 NM		RW36
CATEGORY	A	B	C	D
LPV DA	953-1		300 (300-1)	
LNAV/VNAV DA	1203-2		550 (600-2)	
LNAV MDA	1140-1	487 (500-1)	1140-1¼ 487 (500-1¼)	1140-1½ 487 (500-1½)
CIRCLING	1140-1 484 (500-1)	1460-1 804 (900-1)	1760-3 1104 (1200-3)	1820-3 1164 (1200-3)



EC-3, 31 DEC 2020 to 28 JAN 2021

EC-3, 31 DEC 2020 to 28 JAN 2021