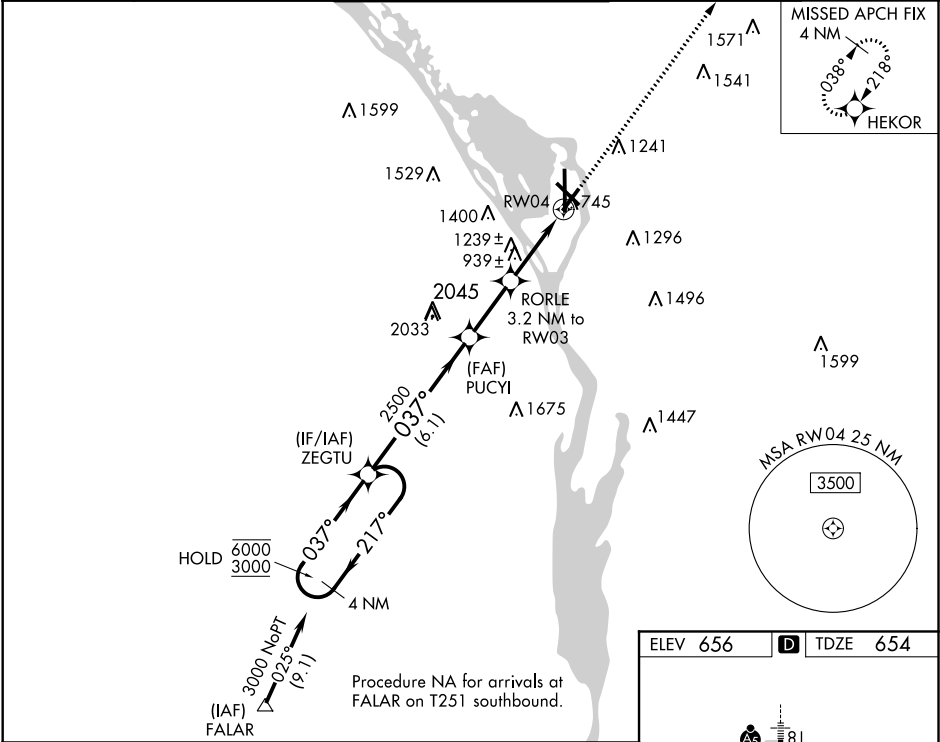


WAAS CH <b>82622</b> <b>W04A</b>	APP CRS <b>037°</b>	Rwy Idg TDZE <b>654</b> Apt Elev <b>656</b>
--	------------------------	---

RNAV (GPS) RWY 4

LA CROSSE RGNL (LSE')

RNP APCH. <div><div><div><div></div><div></div></div><div><div></div><div></div></div></div><div><div>Circling Rwy 22 NA at night. Rwy 22 helicopter visibility reduction below ¾ SM NA.</div><div>-20°C</div></div></div>		MISSED APPROACH: Climb to 3000 direct HEKOR and hold.		
ATIS <b>124.95</b>	MINNEAPOLIS CENTER <b>128.6 363.0</b>	LA CROSSE TOWER ★ <b>118.45 (CTAF) 0 251.075</b>	GND CON <b>121.8</b>	UNICOM <b>122.95</b>



4 NM Holding Pattern		VGSI and descent angles not coincident (VGSI Angle 4.00/TCH 29).		3000	HEKOR
ZEGTU		PUCYI		RORLE 3.2 NM to RW04	
6000 ← 217°		037° →		3.00° TCH 40	
3000		037°		1.2 NM to RW04	
		2500		RW04	
		1700			
		6.1 NM		2.5 NM	
				2 NM	
				1.2 NM	
CATEGORY	A	B	C	D	
LP MDA	1200-1	546 (600-1)	1200-1½	546 (600-1½)	
LNAV MDA	1620-1¼ 966 (1000-1¼)	1620-1½ 966 (1000-1½)	1620-3	966 (1000-3)	
CIRCLING	1620-1¼ 964 (1000-1¼)	1620-1½ 964 (1000-1½)	1760-3 1104 (1200-3)	1820-3 1164 (1200-3)	

