

WAAS
CH **53528**
W18A

APP CRS
180°

Rwy Idg **5199**
TDZE **430**
Apt Elev **430**

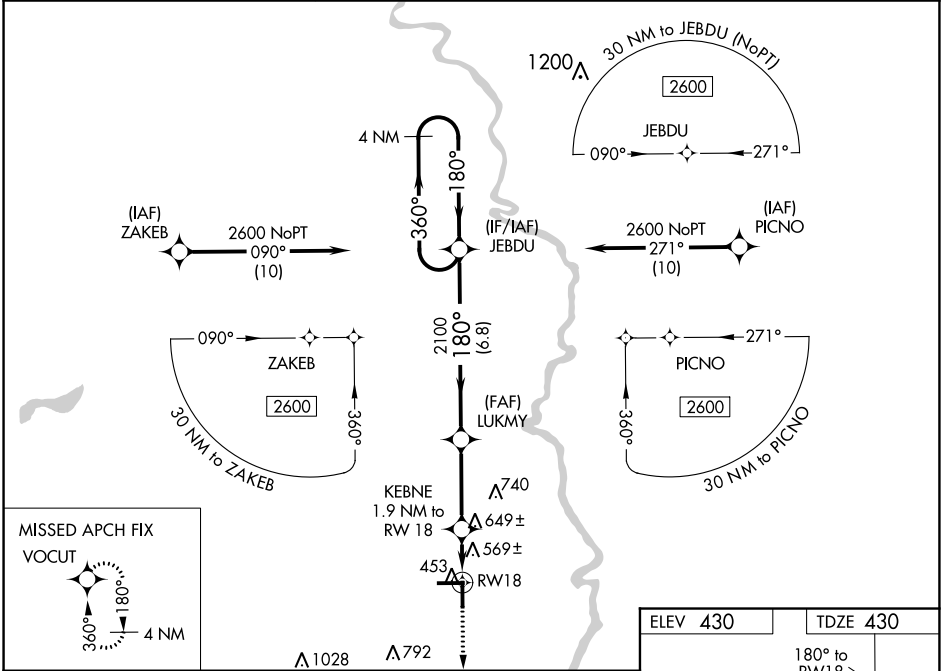
RNAV (GPS) RWY 18

LAWRENCEVILLE-VINCENNES INTL (L WV)

⚠ For uncompensated Baro-VNAV systems, LNAV/VNAV NA below -15°C (5°F) or above 41°C (105°F).
⚠ DME/DME RNP-0.3 NA. Baro-VNAV and VDP NA when using Mount Carmel altimeter setting. When local altimeter setting not received, use Mount Carmel altimeter setting; increase all DA 26 feet, and all MDA 40 feet; increase LNAV/VNAV visibility all Cats ½ mile, LNAV visibility Cats C and D ¼ mile, and Circling visibility Cat C ½ mile. Circling to Rwy 36 NA at night.

MISSED APPROACH:
Climb to 2600 direct
VOCUT and hold.

ASOS 118.0	EVANSVILLE APP CON ★ 125.6 343.7	UNICOM 122.8 (CTAF) ①
----------------------	--	---------------------------------



4 NM Holding Pattern		VGSI and RNAV glidepath not coincident (VGSI Angle 3.00/TCH 25).		2600	VOCUT
2600 ← 360° 180° →		JEBDU	LUKMY	KEBNE	*LNAV only.
GP 3.00° TCH 45		2100	2100	1.9 NM to RWY 18	RWY 18
		6.8 NM	3.2 NM	1.9 NM	
CATEGORY	A	B	C	D	
LPV DA		630-¾	200 (200-¾)		
LNAV/VNAV DA		876-1½	446 (500-1½)		
LNAV MDA	940-1	510 (600-1)	940-1⅜	510 (600-1⅜)	
CIRCLING	940-1	510 (600-1)	940-1½ 510 (600-1½)	980-2 550 (600-2)	

